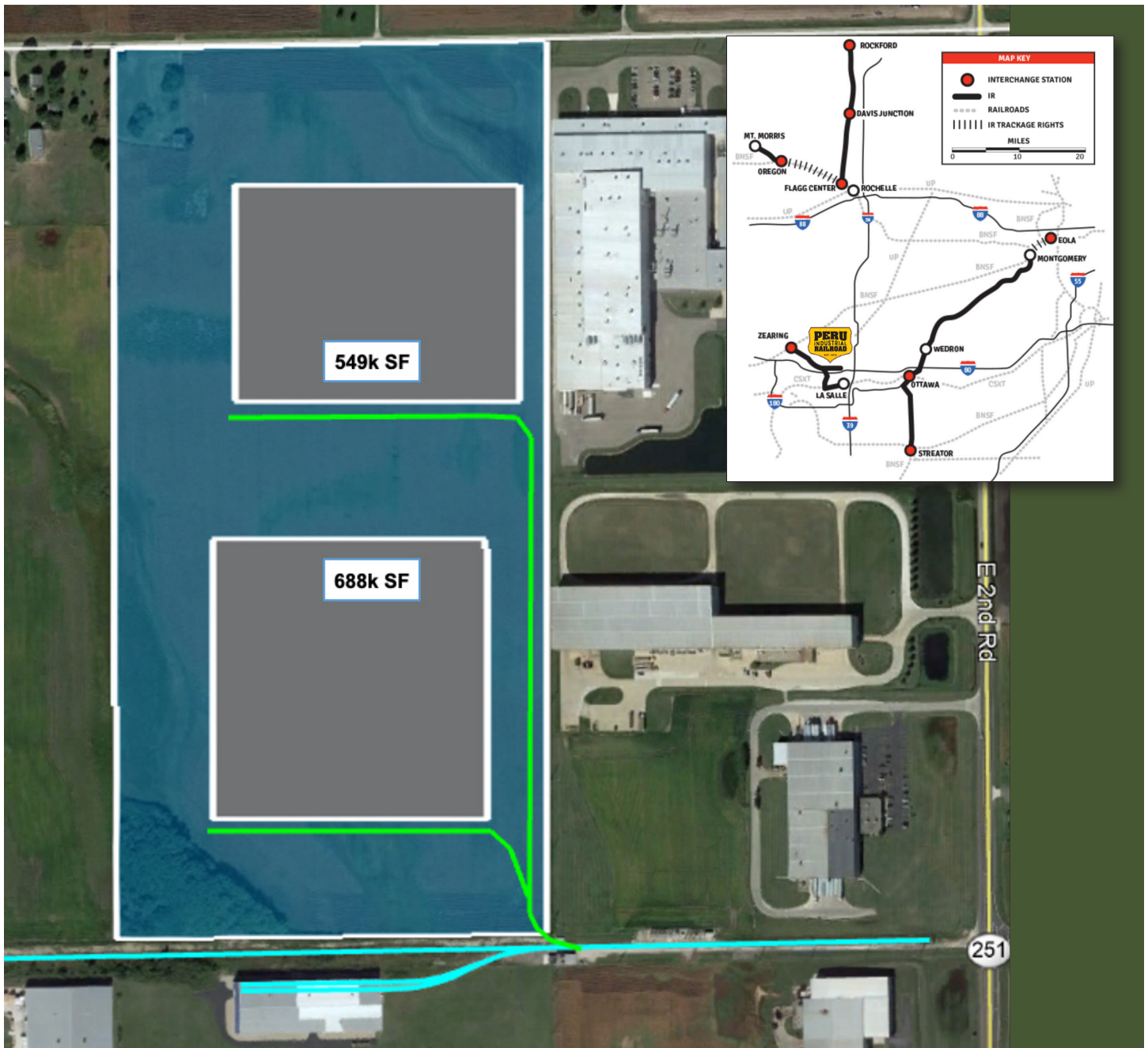


PERU, ILLINOIS • LASALLE COUNTY

100 North 31st Road



Site Specifications

Address	100 North 31st Road	Acres	80	Building sq. ft.	549 K, 688 K
County	LaSalle	Rail Frontage	1,309	Zoning	Industrial
Site Type	Greenfield	Rail Spur	No		

PERU, ILLINOIS • LASALLE AND BUREAU COUNTIES



Area Highlights

Peru is strategically located in North Central Illinois in **LaSalle and Bureau Counties**. The City of Peru is within a 60-mile radius of Rockford, Peoria, Bloomington- Normal, Rock Island-Moline and 90 miles from Chicago. There are many economic opportunities and incentives for business and industrial firms. The City of Peru has a municipally owned Hydro Electric Green Power Plant on the Illinois River. This allows Peru to have nearly the lowest electric rates in the state of Illinois. The wooded community offers the area residents the ability to use the Illinois River for not only recreational activities but for economic activity as well. The City of Peru is surrounded by expansive farm land and supports a diversified industrial, service and agricultural economy.

PERU, ILLINOIS global, national and regional business

Well-known global, national and regional companies operate manufacturing plants and distribution points including:



Centrally Located

Peru, Illinois is strategically located in the exciting Great Lakes region of the United States, with immediate access to the Chicago market of 9 million people, and overnight access to over 40 percent of the North American consumer market.

LOCATION

42 million people within a 5-hour radius

TRANSPORTATION ACCESS and CONNECTIVITY



Rail

Illinois Railway
interchanges with
BNSF, CSX, CN, CP
and NS



Highway

East/West Coast
Canada to Gulf



Waterway

Year round barge
transportation via
the Illinois River



Airport

Illinois Valley
Regional Airport
Municipal Owned

~ 108,669

population of LaSalle County
(2019)

41.8

median age (2018)

88.7%

high school graduates

~ 10,295

population of Peru
(2010 census)

\$56,243

median income (2014-18)

17.9%

Bachelor's degree or higher

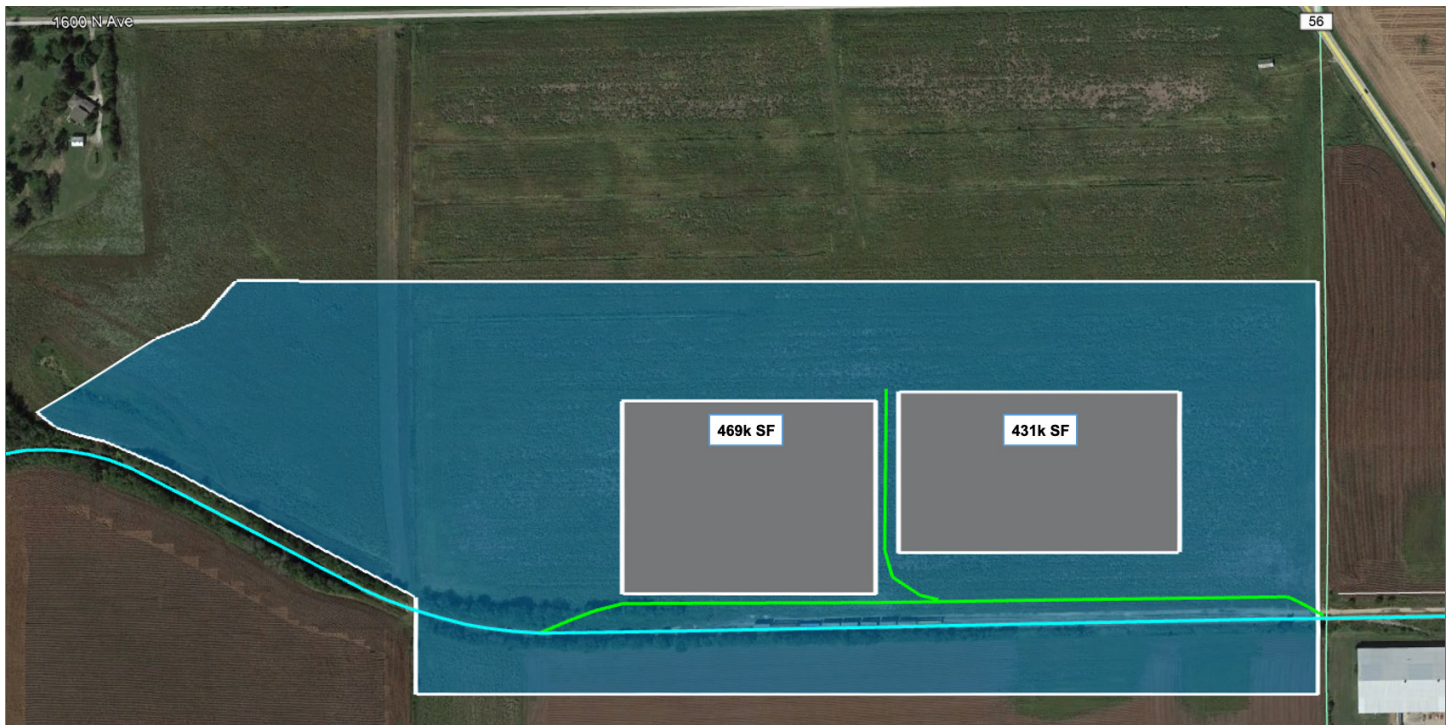
LASALLE COUNTY Statistics

KEY REGIONAL ADVANTAGES

- Access to major markets, without paying major market prices
- One of the lowest property tax rates in Illinois
- iFiber, a locally owned fiber optic line, runs from Chicago to Denver
- Efficient transportation options: road, rail, river, and runway
- Nearly 20 colleges and universities within a 60-mile radius
- Robust workforce development resources
- Flexible business assistance programs
- Multiple TIF Districts and Enterprise Zones
- Community college industrial technology center

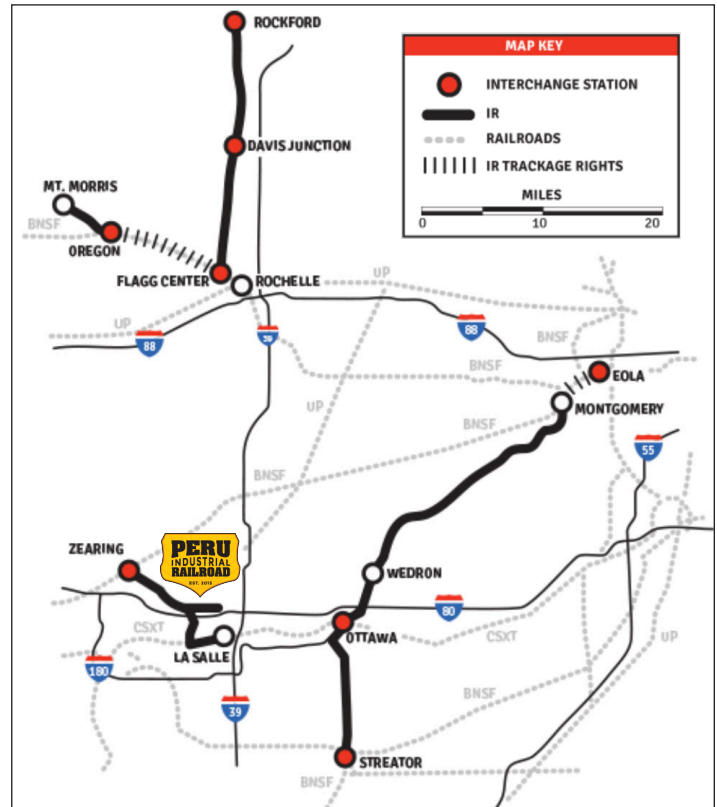
PERU, ILLINOIS • BUREAU COUNTY

1600 N Avenue & Plank Road



Site Specifications

Address	1600 N Avenue & Plank Road
County	Bureau
Site Type	Greenfield
Acres	90
Rail Frontage	4,008
Rail Spur	No
Zoning	Industrial



PERU, ILLINOIS • LASALLE AND BUREAU COUNTIES



Area Highlights

Peru is strategically located in North Central Illinois in **LaSalle and Bureau Counties**. The City of Peru is within a 60-mile radius of Rockford, Peoria, Bloomington- Normal, Rock Island-Moline and 90 miles from Chicago. There are many economic opportunities and incentives for business and industrial firms. The City of Peru has a municipally owned Hydro Electric Green Power Plant on the Illinois River. This allows Peru to have nearly the lowest electric rates in the state of Illinois. The wooded community offers the area residents the ability to use the Illinois River for not only recreational activities but for economic activity as well. The City of Peru is surrounded by expansive farm land and supports a diversified industrial, service and agricultural economy.

PERU, ILLINOIS global, national and regional business

Well-known global, national and regional companies operate manufacturing plants and distribution points including:



Centrally Located

Peru, Illinois is strategically located in the exciting Great Lakes region of the United States, with immediate access to the Chicago market of 9 million people, and overnight access to over 40 percent of the North American consumer market.

LOCATION

42 million people within a 5-hour radius

TRANSPORTATION ACCESS and CONNECTIVITY



Rail

Illinois Railway interchanges with BNSF, CSX, CN, CP and NS



Highway

East/West Coast
Canada to Gulf



Waterway

Year round barge transportation via the Illinois River



Airport

Illinois Valley Regional Airport
Municipal Owned

~ 108,669

population of LaSalle County
(2019)

41.8

median age (2018)

88.7%

high school graduates

~ 10,295

population of Peru
(2010 census)

\$56,243

median income (2014-18)

17.9%

Bachelor's degree or higher

LASALLE COUNTY Statistics

KEY REGIONAL ADVANTAGES

- Access to major markets, without paying major market prices
- One of the lowest property tax rates in Illinois
- iFiber, a locally owned fiber optic line, runs from Chicago to Denver
- Efficient transportation options: road, rail, river, and runway
- Nearly 20 colleges and universities within a 60-mile radius
- Robust workforce development resources
- Flexible business assistance programs
- Multiple TIF Districts and Enterprise Zones
- Community college industrial technology center

PERU, ILLINOIS • LASALLE COUNTY

3060 Plank Road



Site Specifications

Address	3060 Plank Road	Acres	161	Zoning	Industrial
County	LaSalle	Rail Frontage	2,693		
Site Type	Greenfield	Rail Spur	No		

PERU, ILLINOIS • LASALLE AND BUREAU COUNTIES



Area Highlights

Peru is strategically located in North Central Illinois in **LaSalle and Bureau Counties**. The City of Peru is within a 60-mile radius of Rockford, Peoria, Bloomington- Normal, Rock Island-Moline and 90 miles from Chicago. There are many economic opportunities and incentives for business and industrial firms. The City of Peru has a municipally owned Hydro Electric Green Power Plant on the Illinois River. This allows Peru to have nearly the lowest electric rates in the state of Illinois. The wooded community offers the area residents the ability to use the Illinois River for not only recreational activities but for economic activity as well. The City of Peru is surrounded by expansive farm land and supports a diversified industrial, service and agricultural economy.

PERU, ILLINOIS global, national and regional business

Well-known global, national and regional companies operate manufacturing plants and distribution points including:



Centrally Located

Peru, Illinois is strategically located in the exciting Great Lakes region of the United States, with immediate access to the Chicago market of 9 million people, and overnight access to over 40 percent of the North American consumer market.

LOCATION

42 million people within a 5-hour radius

TRANSPORTATION ACCESS and CONNECTIVITY



Rail

Illinois Railway interchanges with BNSF, CSX, CN, CP and NS



Highway

East/West Coast
Canada to Gulf



Waterway

Year round barge transportation via the Illinois River



Airport

Illinois Valley Regional Airport
Municipal Owned

~ 108,669

population of LaSalle County (2019)

41.8

median age (2018)

88.7%

high school graduates

~ 10,295

population of Peru (2010 census)

\$56,243

median income (2014-18)

17.9%

Bachelor's degree or higher

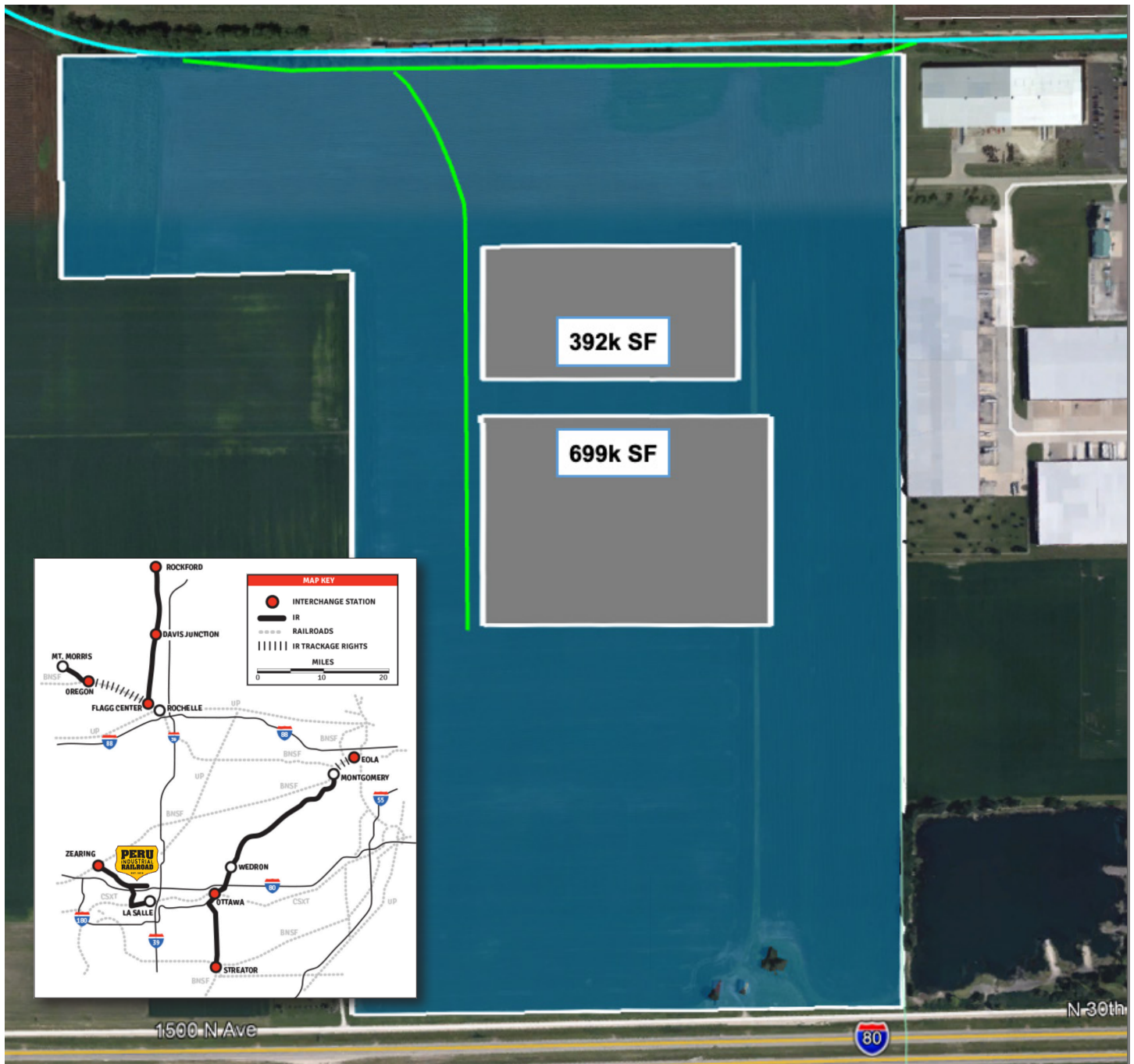
LASALLE COUNTY Statistics

KEY REGIONAL ADVANTAGES

- Access to major markets, without paying major market prices
- One of the lowest property tax rates in Illinois
- iFiber, a locally owned fiber optic line, runs from Chicago to Denver
- Efficient transportation options: road, rail, river, and runway
- Nearly 20 colleges and universities within a 60-mile radius
- Robust workforce development resources
- Flexible business assistance programs
- Multiple TIF Districts and Enterprise Zones
- Community college industrial technology center

PERU, ILLINOIS • BUREAU COUNTY

5000 Industrial Park Boulevard



Site Specifications

Address **5000 Industrial Park Blvd**
 County **Bureau**
 Site Type **Greenfield**

Acres **140**
 Rail Frontage **2,523**
 Rail Spur **No**

Building sq. ft. **392 K, 699 K**
 Zoning **Industrial**

PERU, ILLINOIS • LASALLE AND BUREAU COUNTIES



Area Highlights

Peru is strategically located in North Central Illinois in **LaSalle and Bureau Counties**. The City of Peru is within a 60-mile radius of Rockford, Peoria, Bloomington- Normal, Rock Island-Moline and 90 miles from Chicago. There are many economic opportunities and incentives for business and industrial firms. The City of Peru has a municipally owned Hydro Electric Green Power Plant on the Illinois River. This allows Peru to have nearly the lowest electric rates in the state of Illinois. The wooded community offers the area residents the ability to use the Illinois River for not only recreational activities but for economic activity as well. The City of Peru is surrounded by expansive farm land and supports a diversified industrial, service and agricultural economy.

PERU, ILLINOIS global, national and regional business

Well-known global, national and regional companies operate manufacturing plants and distribution points including:



Centrally Located

Peru, Illinois is strategically located in the exciting Great Lakes region of the United States, with immediate access to the Chicago market of 9 million people, and overnight access to over 40 percent of the North American consumer market.

LOCATION

42 million people within a 5-hour radius

TRANSPORTATION ACCESS and CONNECTIVITY



Rail

Illinois Railway interchanges with BNSF, CSX, CN, CP and NS



Highway

East/West Coast
Canada to Gulf



Waterway

Year round barge transportation via the Illinois River



Airport

Illinois Valley Regional Airport
Municipal Owned

~ 108,669

population of LaSalle County
(2019)

41.8

median age (2018)

88.7%

high school graduates

~ 10,295

population of Peru
(2010 census)

\$56,243

median income (2014-18)

17.9%

Bachelor's degree or higher

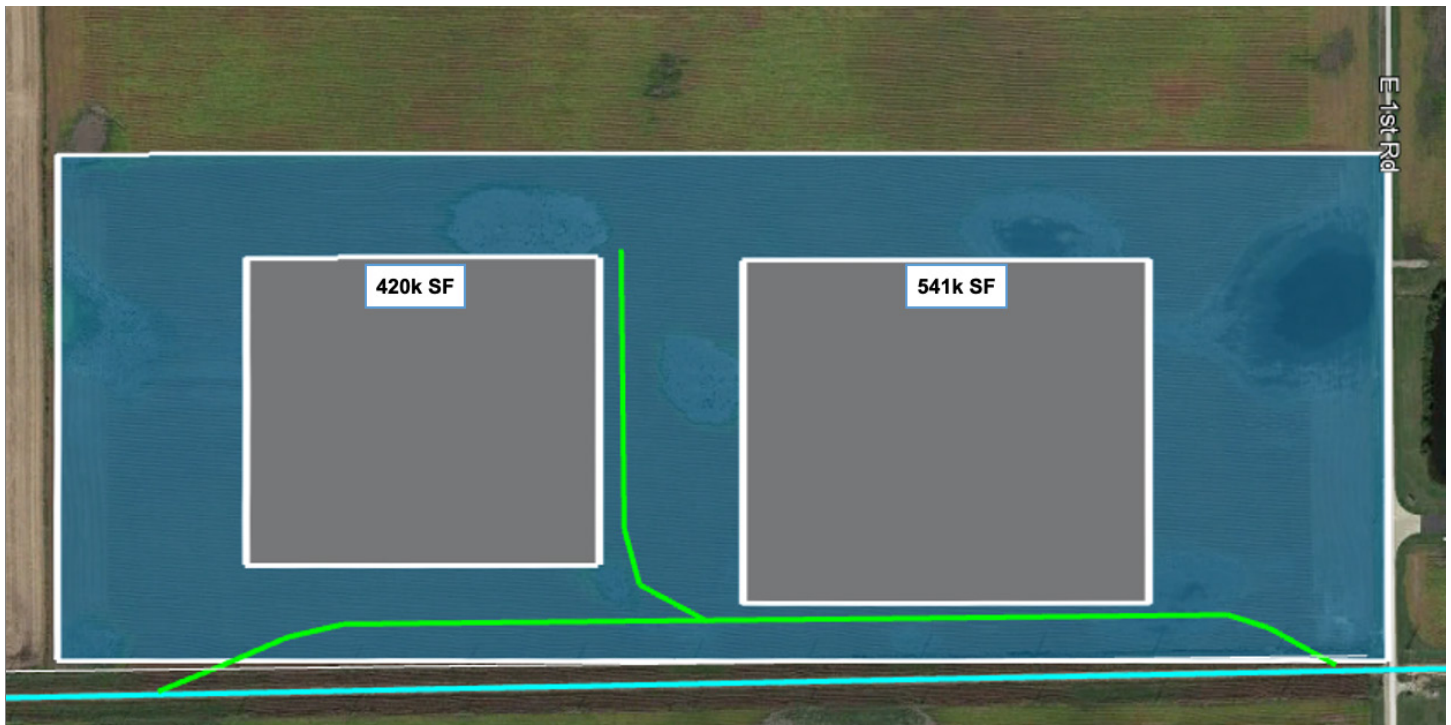
LASALLE COUNTY Statistics

KEY REGIONAL ADVANTAGES

- Access to major markets, without paying major market prices
- One of the lowest property tax rates in Illinois
- iFiber, a locally owned fiber optic line, runs from Chicago to Denver
- Efficient transportation options: road, rail, river, and runway
- Nearly 20 colleges and universities within a 60-mile radius
- Robust workforce development resources
- Flexible business assistance programs
- Multiple TIF Districts and Enterprise Zones
- Community college industrial technology center

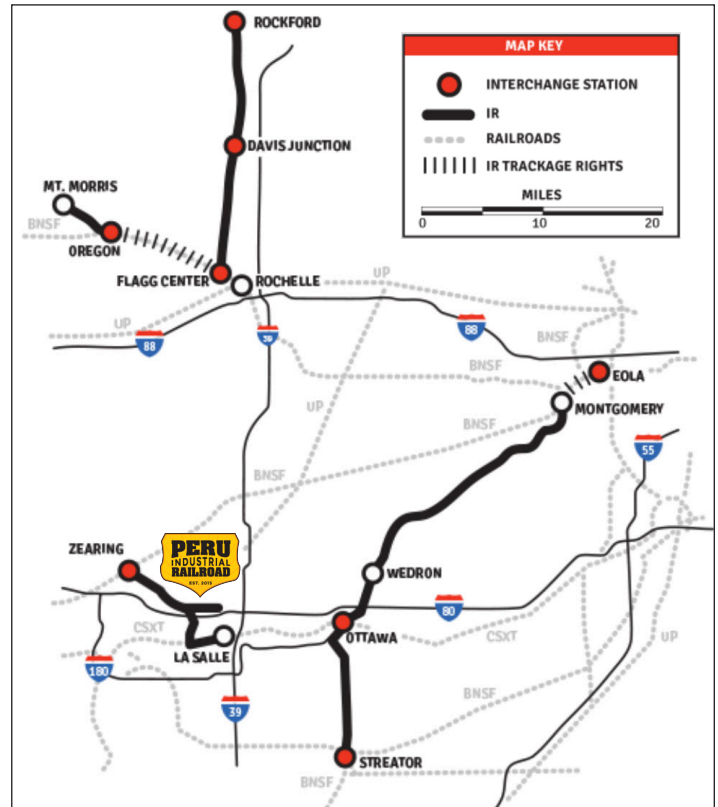
PERU, ILLINOIS • LASALLE COUNTY

5351 Donlar Avenue



Site Specifications

Address	5351 Donlar Avenue
County	LaSalle
Site Type	Greenfield
Acres	60
Rail Frontage	2,588
Rail Spur	No
Building sq. ft.	420 K, 541 K
Zoning	Industrial



PERU, ILLINOIS • LASALLE AND BUREAU COUNTIES



Area Highlights

Peru is strategically located in North Central Illinois in **LaSalle and Bureau Counties**. The City of Peru is within a 60-mile radius of Rockford, Peoria, Bloomington- Normal, Rock Island-Moline and 90 miles from Chicago. There are many economic opportunities and incentives for business and industrial firms. The City of Peru has a municipally owned Hydro Electric Green Power Plant on the Illinois River. This allows Peru to have nearly the lowest electric rates in the state of Illinois. The wooded community offers the area residents the ability to use the Illinois River for not only recreational activities but for economic activity as well. The City of Peru is surrounded by expansive farm land and supports a diversified industrial, service and agricultural economy.

PERU, ILLINOIS global, national and regional business

Well-known global, national and regional companies operate manufacturing plants and distribution points including:



Centrally Located

Peru, Illinois is strategically located in the exciting Great Lakes region of the United States, with immediate access to the Chicago market of 9 million people, and overnight access to over 40 percent of the North American consumer market.

LOCATION

42 million people within a 5-hour radius

TRANSPORTATION ACCESS and CONNECTIVITY



Rail

Illinois Railway interchanges with BNSF, CSX, CN, CP and NS



Highway

East/West Coast
Canada to Gulf



Waterway

Year round barge transportation via the Illinois River



Airport

Illinois Valley Regional Airport
Municipal Owned

~ 108,669

population of LaSalle County (2019)

41.8

median age (2018)

88.7%

high school graduates

~ 10,295

population of Peru (2010 census)

\$56,243

median income (2014-18)

17.9%

Bachelor's degree or higher

LASALLE COUNTY Statistics

KEY REGIONAL ADVANTAGES

- Access to major markets, without paying major market prices
- One of the lowest property tax rates in Illinois
- iFiber, a locally owned fiber optic line, runs from Chicago to Denver
- Efficient transportation options: road, rail, river, and runway
- Nearly 20 colleges and universities within a 60-mile radius
- Robust workforce development resources
- Flexible business assistance programs
- Multiple TIF Districts and Enterprise Zones
- Community college industrial technology center

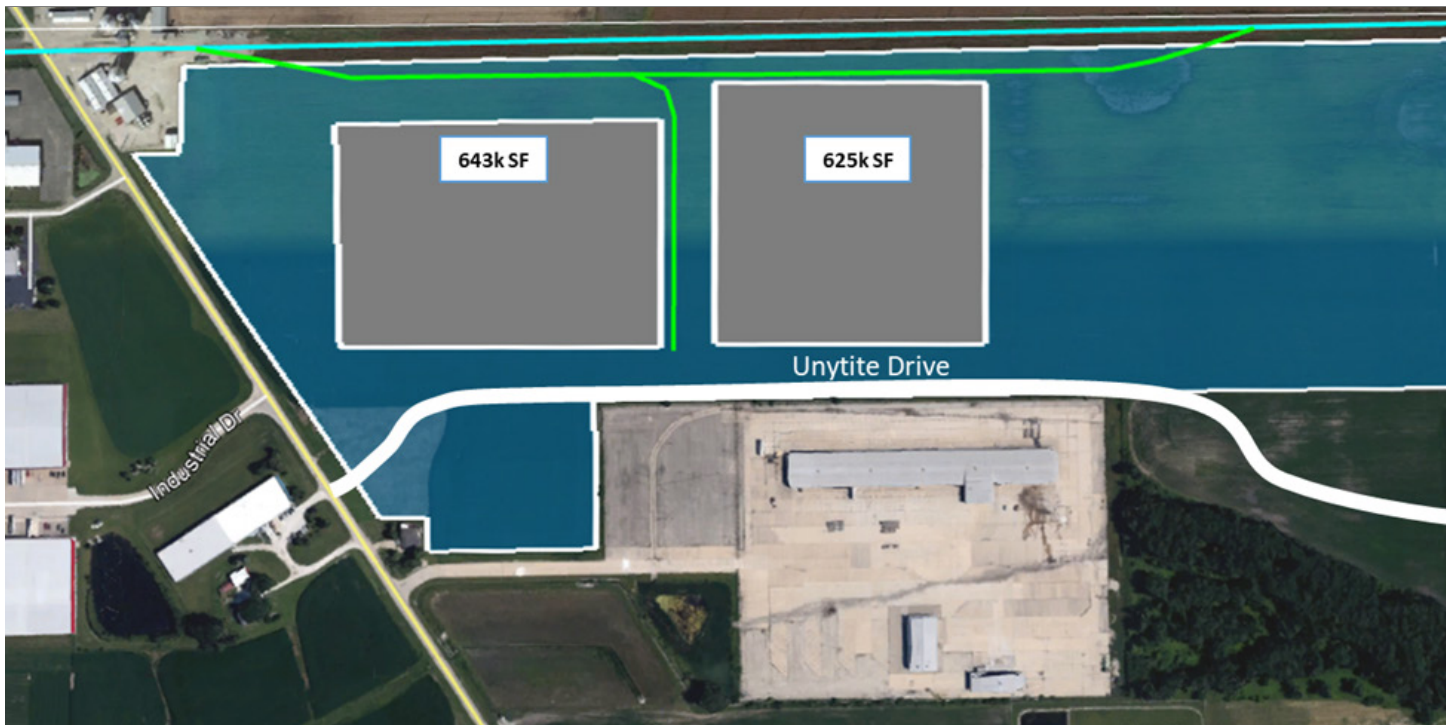
RAIL MADE

EASY

OmniTRAX Rail-Ready Sites

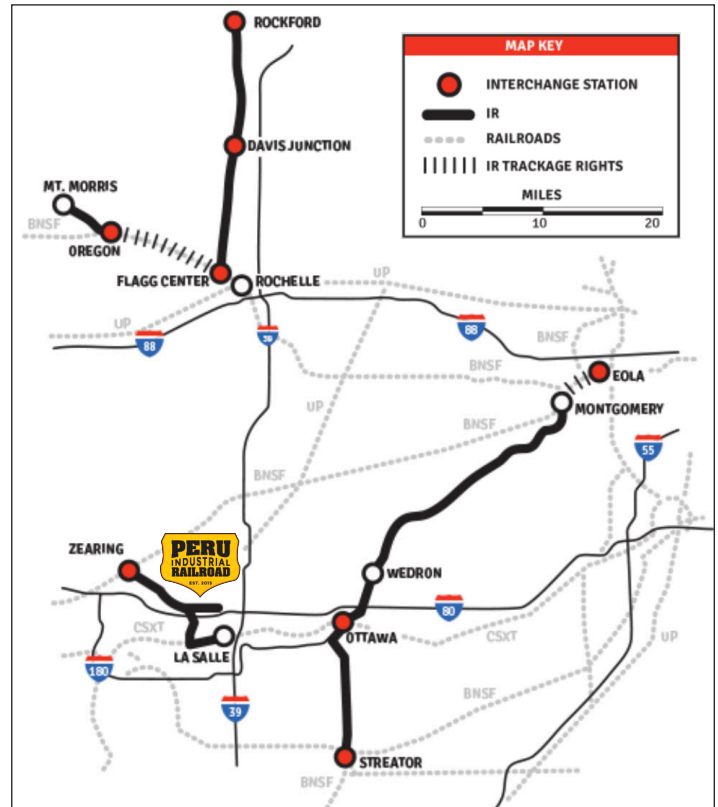
PERU, ILLINOIS • LASALLE COUNTY

5500 Plank Road



Site Specifications

Address	5500 Plank Road
County	LaSalle
Site Type	Greenfield
Acres	89
Rail Frontage	4,207
Rail Spur	No
Zoning	Industrial



Ean Johnson, CEcD
ejohnson@omnitrax.com
469-261-2083



Welcome to the City of
PERU

Bob Vickrey, Economic Development Director
bobvickrey@peru.il.us
815-224-6018

PERU, ILLINOIS • LASALLE AND BUREAU COUNTIES



Area Highlights

Peru is strategically located in North Central Illinois in **LaSalle and Bureau Counties**. The City of Peru is within a 60-mile radius of Rockford, Peoria, Bloomington- Normal, Rock Island-Moline and 90 miles from Chicago. There are many economic opportunities and incentives for business and industrial firms. The City of Peru has a municipally owned Hydro Electric Green Power Plant on the Illinois River. This allows Peru to have nearly the lowest electric rates in the state of Illinois. The wooded community offers the area residents the ability to use the Illinois River for not only recreational activities but for economic activity as well. The City of Peru is surrounded by expansive farm land and supports a diversified industrial, service and agricultural economy.

PERU, ILLINOIS global, national and regional business

Well-known global, national and regional companies operate manufacturing plants and distribution points including:



Centrally Located

Peru, Illinois is strategically located in the exciting Great Lakes region of the United States, with immediate access to the Chicago market of 9 million people, and overnight access to over 40 percent of the North American consumer market.

LOCATION

42 million people within a 5-hour radius

TRANSPORTATION ACCESS and CONNECTIVITY



Rail

Illinois Railway
interchanges with
BNSF, CSX, CN, CP
and NS



Highway

East/West Coast
Canada to Gulf



Waterway

Year round barge
transportation via
the Illinois River



Airport

Illinois Valley
Regional Airport
Municipal Owned

~ 108,669

population of LaSalle County
(2019)

41.8

median age (2018)

88.7%

high school graduates

~ 10,295

population of Peru
(2010 census)

\$56,243

median income (2014-18)

17.9%

Bachelor's degree or higher

LASALLE COUNTY Statistics

KEY REGIONAL ADVANTAGES

- Access to major markets, without paying major market prices
- One of the lowest property tax rates in Illinois
- iFiber, a locally owned fiber optic line, runs from Chicago to Denver
- Efficient transportation options: road, rail, river, and runway
- Nearly 20 colleges and universities within a 60-mile radius
- Robust workforce development resources
- Flexible business assistance programs
- Multiple TIF Districts and Enterprise Zones
- Community college industrial technology center



Ean Johnson, CEcD
ejohnson@omnitrax.com
469-261-2083



Welcome to the City of

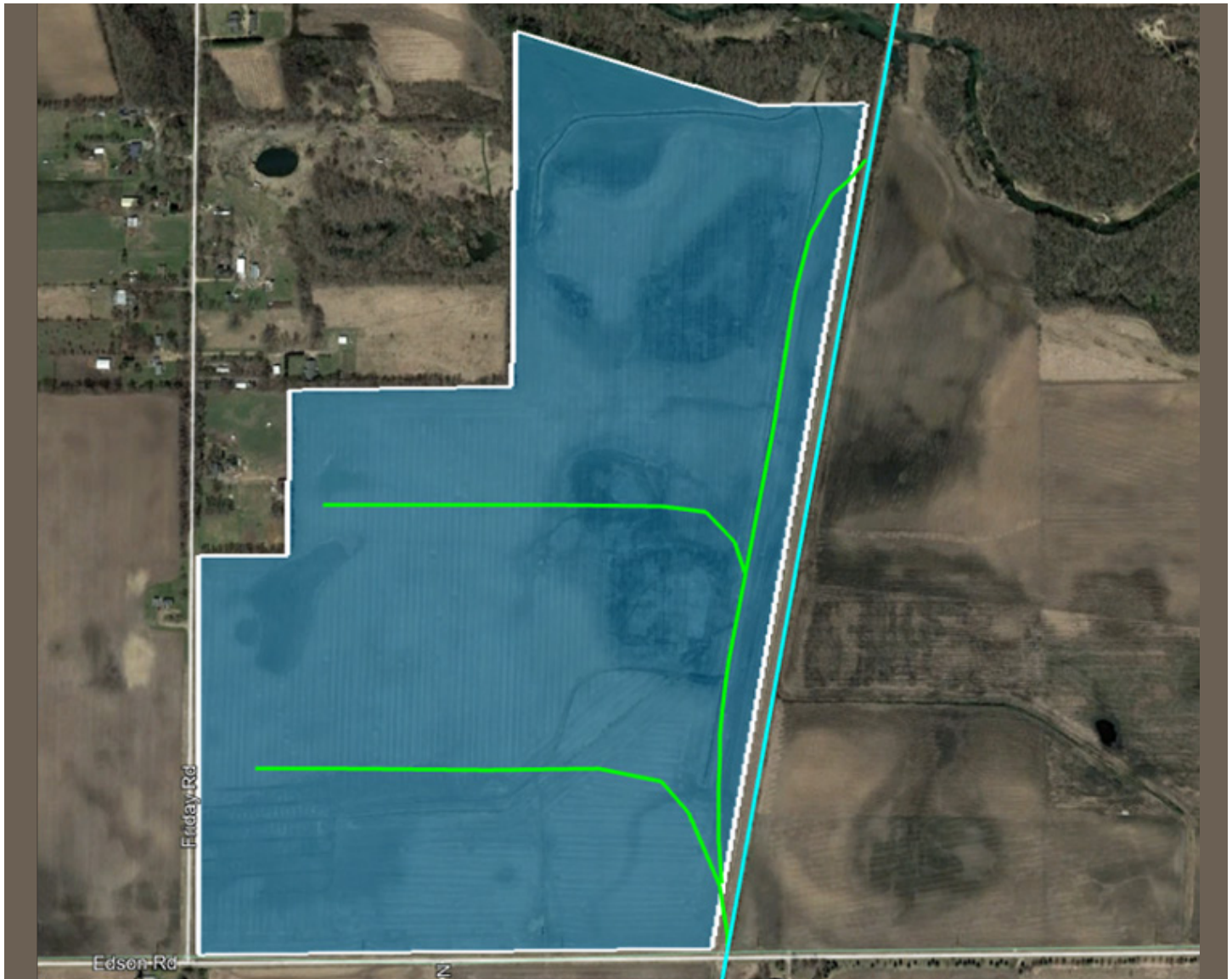
PERU

Bob Vickrey, Economic Development Director
bobvickrey@peru.il.us
815-224-6018

ROCKFORD, ILLINOIS • WINNEBAGO COUNTY

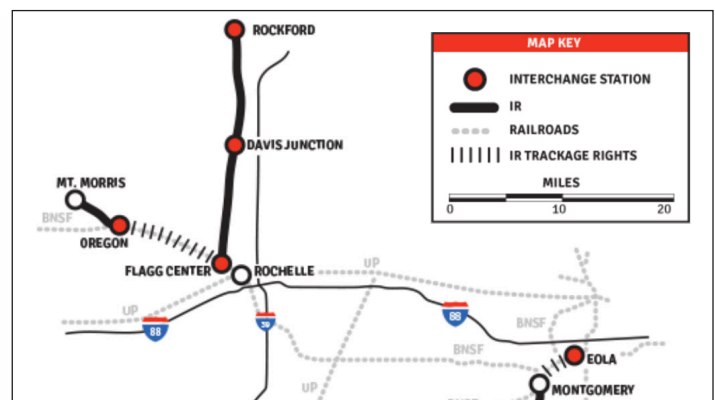


Northwest of Edson Road & Friday Road



Site Specifications

Address	Northwest of Edson Road & Friday Road
County	Winnebago
Site Type	Greenfield
Acres	1,058
Rail Frontage	3,981
Rail Spur	No
Building sq. ft.	
Building Height	
Zoning	Industrial



ROCKFORD, ILLINOIS • WINNEBAGO COUNTY

Area Highlights



The **Rockford Region** has established nimble, industry specific, and customized education-to-workforce pipelines ensuring business here have the skilled workforce essential to filling jobs that are good today, tomorrow, and in the future.

ROCKFORD AREA Rapid economic development

Well-known global, national and regional companies operate manufacturing plants and distribution points including:



Centrally Located

Ideal interstate and railroad connections – four interstates run through the region, businesses located here can reach 75 percent of U.S. businesses within a 24-hour truck drive.

LOCATION Proximity to Chicago

TRANSPORTATION ACCESS and CONNECTIVITY



Rail

Illinois Railway
interchanges with
BNSF, CSX and UP



Highway



FTZ #176

Designated
Foreign Trade Zone



Airport

Rockford
International
Airport

~ **282,572**

population of
Winnebago County (2019)

39.6

median age (2018)

88.7%

high school graduates

~ **147,881**

population of Brownsville
(2018)

\$53,345

median income (2014-18)

21.2%

Bachelor's degree or higher

WINNEBAGO COUNTY Statistics

WORKFORCE AVAILABILITY and COMMUTE TIME

- The two-county Rockford Metropolitan Statistical Area (Boone & Winnebago Counties) has a primary labor force of 176,700.
- Rockford's secondary labor shed extends even farther, with 515,000 workers within a 45-minute commute.
- This means individuals who live in Elgin, Illinois can commute to Rockford in the same or less time it takes to commute to Chicago.

RAIL MADE

EASY

OmniTRAX Rail-Ready Sites

ROCKFORD, ILLINOIS • WINNEBAGO COUNTY



707 Harrison Avenue



Site Specifications

Address	707 Harrison Avenue
County	Winnebago
Site Type	Existing
Acres	36.1
Rail Frontage	2,011
Rail Spur	No
Building sq. ft.	581K
Building Height	
Zoning	Industrial



Ean Johnson, CEcD
ejohnson@omnitrax.com
469-261-2083



Gerald D. Sagona
Vice President Business Development
gsagona@rockfordil.com
815-979-5621

ROCKFORD, ILLINOIS • WINNEBAGO COUNTY

Area Highlights



The **Rockford Region** has established nimble, industry specific, and customized education-to-workforce pipelines ensuring business here have the skilled workforce essential to filling jobs that are good today, tomorrow, and in the future.

ROCKFORD AREA Rapid economic development

Well-known global, national and regional companies operate manufacturing plants and distribution points including:



Centrally Located

Ideal interstate and railroad connections – four interstates run through the region, businesses located here can reach 75 percent of U.S. businesses within a 24-hour truck drive.

LOCATION Proximity to Chicago

TRANSPORTATION ACCESS and CONNECTIVITY



Rail

Illinois Railway
interchanges with
BNSF, CSX and UP



Highway



FTZ #176

Designated
Foreign Trade Zone



Airport

Rockford
International
Airport

~ 282,572

population of
Winnebago County (2019)

39.6

median age (2018)

88.7%

high school graduates

~ 147,881

population of Brownsville
(2018)

\$53,345

median income (2014-18)

21.2%

Bachelor's degree or higher

WINNEBAGO COUNTY Statistics

WORKFORCE AVAILABILITY and COMMUTE TIME

- The two-county Rockford Metropolitan Statistical Area (Boone & Winnebago Counties) has a primary labor force of 176,700.
- Rockford's secondary labor shed extends even farther, with 515,000 workers within a 45-minute commute.
- This means individuals who live in Elgin, Illinois can commute to Rockford in the same or less time it takes to commute to Chicago.

RAIL MADE

EASY

OmniTRAX Rail-Ready Sites

ROCKFORD, ILLINOIS • WINNEBAGO COUNTY

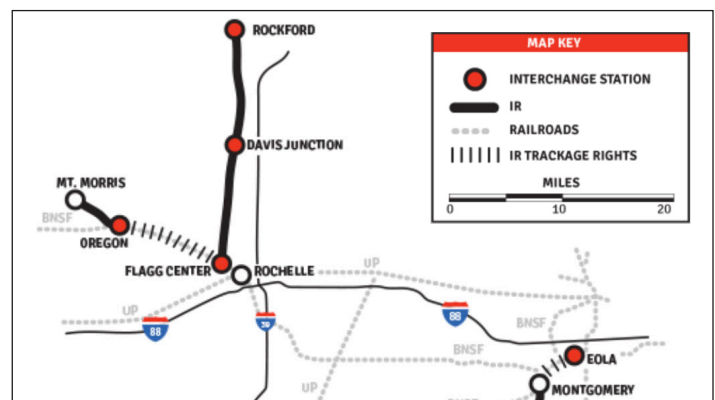


4500 Kishwaukke Street



Site Specifications

Address	4500 Kishwaukke Street
County	Winnebago
Site Type	Existing
Acres	34.9
Rail Frontage	1,283
Rail Spur	No
Building sq. ft.	
Building Height	
Zoning	Industrial



Ean Johnson, CEcD
ejohnson@omnitrax.com
469-261-2083



Gerald D. Sagona
Vice President Business Development
gsagona@rockfordil.com
815-979-5621

ROCKFORD, ILLINOIS • WINNEBAGO COUNTY

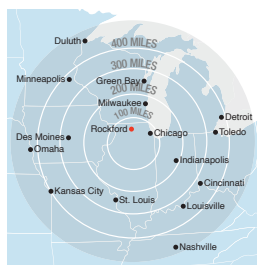
Area Highlights



The **Rockford Region** has established nimble, industry specific, and customized education-to-workforce pipelines ensuring business here have the skilled workforce essential to filling jobs that are good today, tomorrow, and in the future.

ROCKFORD AREA Rapid economic development

Well-known global, national and regional companies operate manufacturing plants and distribution points including:



Centrally Located

Ideal interstate and railroad connections – four interstates run through the region, businesses located here can reach 75 percent of U.S. businesses within a 24-hour truck drive.

LOCATION Proximity to Chicago

TRANSPORTATION ACCESS and CONNECTIVITY



Rail

Illinois Railway
interchanges with
BNSF, CSX and UP



Highway



FTZ #176

Designated
Foreign Trade Zone



Airport

Rockford
International
Airport

~ **282,572**

population of
Winnebago County (2019)

39.6

median age (2018)

88.7%

high school graduates

~ **147,881**

population of Brownsville
(2018)

\$53,345

median income (2014-18)

21.2%

Bachelor's degree or higher

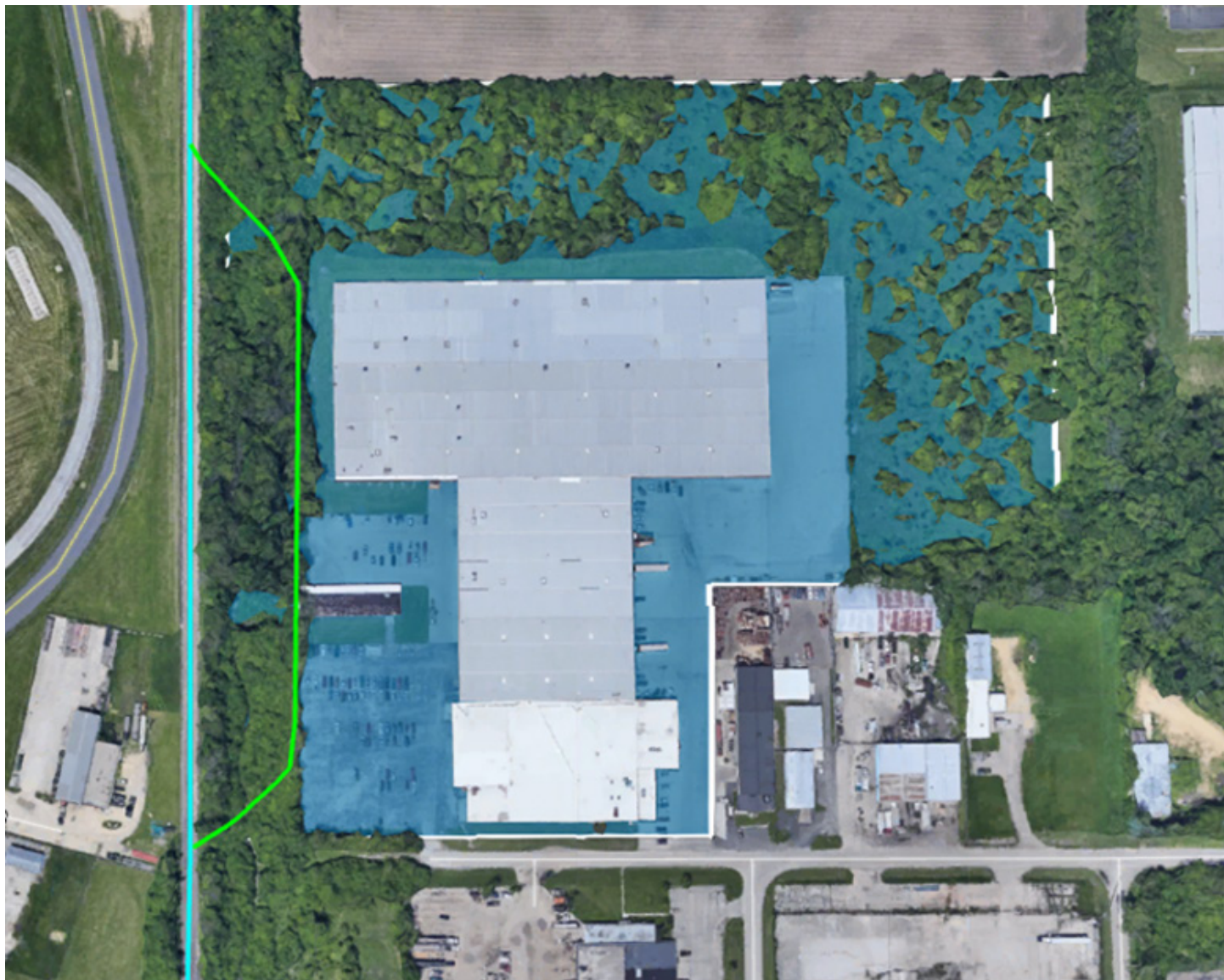
WINNEBAGO COUNTY Statistics

WORKFORCE AVAILABILITY and COMMUTE TIME

- The two-county Rockford Metropolitan Statistical Area (Boone & Winnebago Counties) has a primary labor force of 176,700.
- Rockford's secondary labor shed extends even farther, with 515,000 workers within a 45-minute commute.
- This means individuals who live in Elgin, Illinois can commute to Rockford in the same or less time it takes to commute to Chicago.

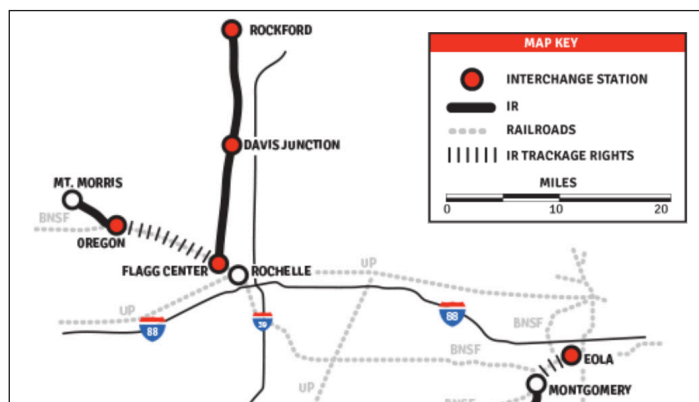
ROCKFORD, ILLINOIS • WINNEBAGO COUNTY

1122 Milford Avenue



Site Specifications

Address	1122 Milford Avenue
County	Winnebago
Site Type	Existing
Acres	24.6
Rail Frontage	1,069
Rail Spur	No
Building sq. ft.	305K
Building Height	
Zoning	Industrial



ROCKFORD, ILLINOIS • WINNEBAGO COUNTY

Area Highlights



The **Rockford Region** has established nimble, industry specific, and customized education-to-workforce pipelines ensuring business here have the skilled workforce essential to filling jobs that are good today, tomorrow, and in the future.

ROCKFORD AREA Rapid economic development

Well-known global, national and regional companies operate manufacturing plants and distribution points including:



Centrally Located

Ideal interstate and railroad connections – four interstates run through the region, businesses located here can reach 75 percent of U.S. businesses within a 24-hour truck drive.

LOCATION Proximity to Chicago

TRANSPORTATION ACCESS and CONNECTIVITY



Rail

Illinois Railway
interchanges with
BNSF, CSX and UP



Highway



FTZ #176

Designated
Foreign Trade Zone



Airport

Rockford
International
Airport

~ 282,572

population of
Winnebago County (2019)

39.6

median age (2018)

88.7%

high school graduates

~ 147,881

population of Brownsville
(2018)

\$53,345

median income (2014-18)

21.2%

Bachelor's degree or higher

WINNEBAGO COUNTY Statistics

WORKFORCE AVAILABILITY and COMMUTE TIME

- The two-county Rockford Metropolitan Statistical Area (Boone & Winnebago Counties) has a primary labor force of 176,700.
- Rockford's secondary labor shed extends even farther, with 515,000 workers within a 45-minute commute.
- This means individuals who live in Elgin, Illinois can commute to Rockford in the same or less time it takes to commute to Chicago.