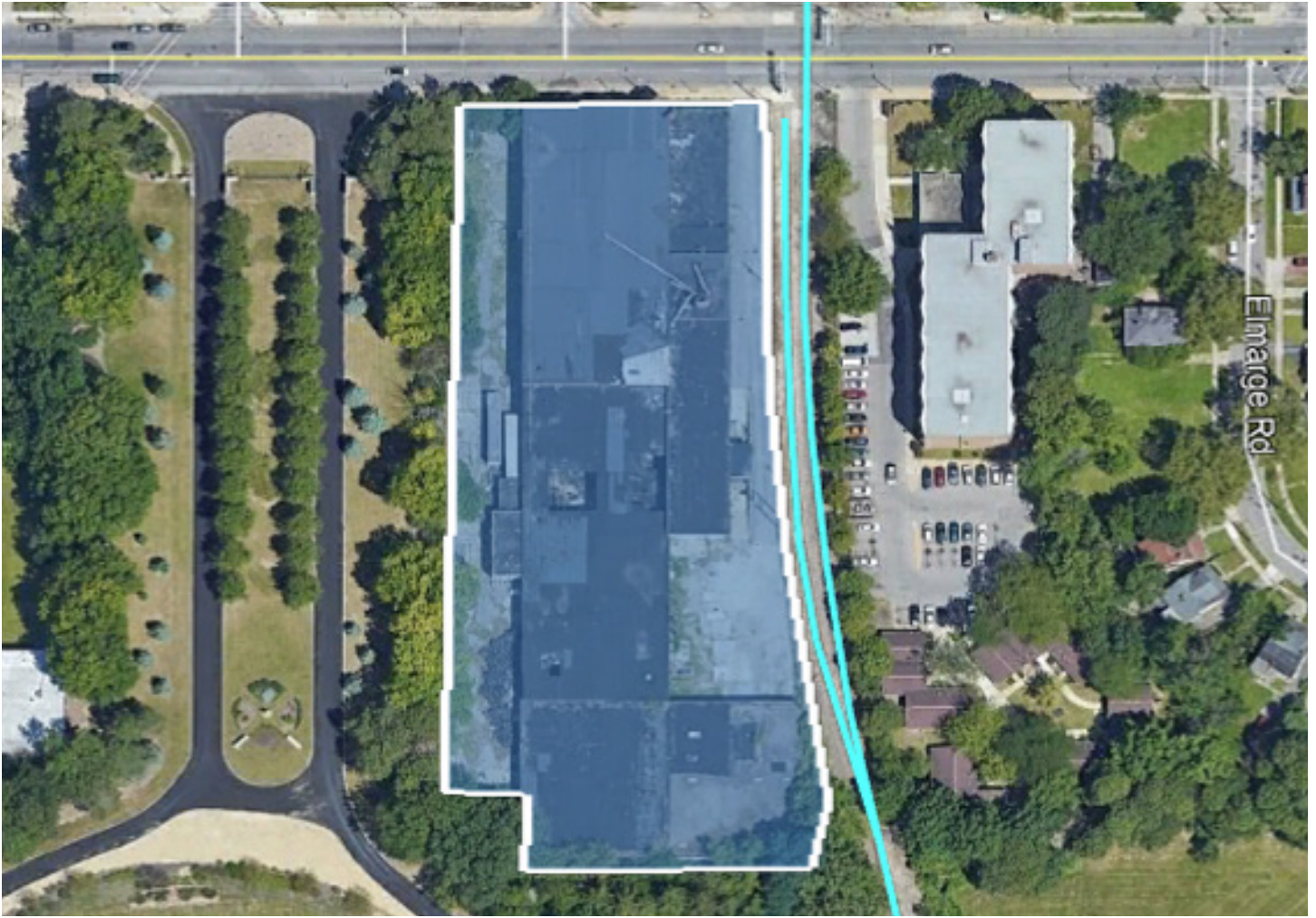


CUYAHOGA COUNTY • OHIO

10200 Miles Avenue, Cleveland



Site Specifications

Site Type	Existing Facility
Rail Access	Served
Acres	n/a
Building Square Feet	74,000
Ceiling Height	18-22'
Zoning	Industrial
Distance to Highway	1.8 miles

CUYAHOGA COUNTY • OHIO

Area Highlights



LEADERSHIP and INGENUITY

Northeast Ohio is an 18-county region forged from **generations of hard work, innovation and determination**. We're a region that is igniting change and driving emerging markets with world-class developments and advanced manufacturing.

advanced manufacturing • aerospace and aviation • automotive • bio-health • food processing
headquarters and professional services • information technology • metal production and fabrication
oil and gas • polymers and materials



Centrally located and convenient

The Northeast Ohio region is centrally located between New York City, Chicago and Toronto, allowing quick market access to more than half of North America, including Canada. Almost 50 percent of the U.S. population is within 500 miles/805 km of the Cleveland Plus Region. Additionally, 60 percent of all U.S. Fortune 500 headquarters are within a day's drive of the region.

LOCATION

Conveniently connecting the world to you.

TRANSPORTATION ACCESS and CONNECTIVITY



Rail

CCRL, NS, WLE



Highway

Major Roadways



Port

Port of Cleveland



Airport

Cleveland-Hopkins International Airport

Cuyahoga County offers companies a remarkable pool of skilled workers.

1,235,072

population

40.3

median age

538,531

households

\$48,435

median household income

614,500

labor force

68,611

total employees in manufacturing

116,446

total employees in trade, transportation and utilities

10

higher education institutions

CUYAHOGA COUNTY Area Statistics

INCENTIVES

Local, State, and
Workforce Training
Assistance

The Enterprise Zone Program - Communities in Ohio may establish an **Enterprise Zone** that provides local officials with the ability to negotiate a tax incentive agreement with a prospective company. The Enterprise Zone Agreement is a contract between the community and the company. This contract must be executed prior to any portion of the project beginning. The rate and term of the tax exemption are negotiated between local officials and the company.

Economic Development Grant - The **JobsOhio Economic Development Grant** was created to promote economic development, business expansion, and job creation by providing funding for eligible projects in the State of Ohio. Grant decisions are based on a number of project factors, including but not limited to job creation, additional payroll, fixed-asset investment commitment, project return on investment, and project location.

CUYAHOGA COUNTY • OHIO

5450 Richmond Road, Solon



Site Specifications

Site Type	Greenfield
Rail Access	Adjacent
Acres	20.4
Building Square Feet	n/a
Ceiling Height	n/a
Zoning	Industrial
Distance to Highway	1.1 miles

CUYAHOGA COUNTY • OHIO

Area Highlights



LEADERSHIP and INGENUITY

Northeast Ohio is an 18-county region forged from **generations of hard work, innovation and determination**. We're a region that is igniting change and driving emerging markets with world-class developments and advanced manufacturing.

advanced manufacturing • aerospace and aviation • automotive • bio-health • food processing
headquarters and professional services • information technology • metal production and fabrication
oil and gas • polymers and materials



Centrally located and convenient

The Northeast Ohio region is centrally located between New York City, Chicago and Toronto, allowing quick market access to more than half of North America, including Canada. Almost 50 percent of the U.S. population is within 500 miles/805 km of the Cleveland Plus Region. Additionally, 60 percent of all U.S. Fortune 500 headquarters are within a day's drive of the region.

LOCATION

Conveniently connecting the world to you.

TRANSPORTATION ACCESS and CONNECTIVITY



Rail

CCRL, NS, WLE



Highway

Major Roadways



Port

Port of Cleveland



Airport

Cleveland-Hopkins International Airport

Cuyahoga County offers companies a remarkable pool of skilled workers.

1,235,072

population

40.3

median age

538,531

households

\$48,435

median household income

614,500

labor force

68,611

total employees in manufacturing

116,446

total employees in trade, transportation and utilities

10

higher education institutions

CUYAHOGA COUNTY Area Statistics

INCENTIVES

Local, State, and
Workforce Training
Assistance

The Enterprise Zone Program - Communities in Ohio may establish an **Enterprise Zone** that provides local officials with the ability to negotiate a tax incentive agreement with a prospective company. The Enterprise Zone Agreement is a contract between the community and the company. This contract must be executed prior to any portion of the project beginning. The rate and term of the tax exemption are negotiated between local officials and the company.

Economic Development Grant - The **JobsOhio Economic Development Grant** was created to promote economic development, business expansion, and job creation by providing funding for eligible projects in the State of Ohio. Grant decisions are based on a number of project factors, including but not limited to job creation, additional payroll, fixed-asset investment commitment, project return on investment, and project location.

CUYAHOGA COUNTY • OHIO

29855 Aurora Road, Solon



Site Specifications

Site Type	Greenfield
Rail Access	Out Of Service
Acres	20.0
Building Square Feet	n/a
Ceiling Height	n/a
Zoning	Industrial
Distance to Highway	2.1 miles

CUYAHOGA COUNTY • OHIO

Area Highlights



LEADERSHIP and INGENUITY

Northeast Ohio is an 18-county region forged from **generations of hard work, innovation and determination**. We're a region that is igniting change and driving emerging markets with world-class developments and advanced manufacturing.

advanced manufacturing • aerospace and aviation • automotive • bio-health • food processing
headquarters and professional services • information technology • metal production and fabrication
oil and gas • polymers and materials



Centrally located and convenient

The Northeast Ohio region is centrally located between New York City, Chicago and Toronto, allowing quick market access to more than half of North America, including Canada. Almost 50 percent of the U.S. population is within 500 miles/805 km of the Cleveland Plus Region. Additionally, 60 percent of all U.S. Fortune 500 headquarters are within a day's drive of the region.

LOCATION
Conveniently connecting the world to you.

TRANSPORTATION ACCESS and CONNECTIVITY



Rail

CCRL, NS, WLE



Highway

Major Roadways



Port

Port of Cleveland



Airport

Cleveland-Hopkins International Airport

Cuyahoga County offers companies a remarkable pool of skilled workers.

1,235,072
population

40.3
median age

538,531
households

\$48,435
median household income

614,500
labor force

68,611
total employees in manufacturing

116,446
total employees in trade, transportation and utilities

10
higher education institutions

CUYAHOGA COUNTY Area Statistics

INCENTIVES

Local, State, and
Workforce Training
Assistance

The Enterprise Zone Program - Communities in Ohio may establish an **Enterprise Zone** that provides local officials with the ability to negotiate a tax incentive agreement with a prospective company. The Enterprise Zone Agreement is a contract between the community and the company. This contract must be executed prior to any portion of the project beginning. The rate and term of the tax exemption are negotiated between local officials and the company.

Economic Development Grant - The **JobsOhio Economic Development Grant** was created to promote economic development, business expansion, and job creation by providing funding for eligible projects in the State of Ohio. Grant decisions are based on a number of project factors, including but not limited to job creation, additional payroll, fixed-asset investment commitment, project return on investment, and project location.

CUYAHOGA COUNTY • OHIO

26400 Richmond Rd., Bedford Heights



Site Specifications

Site Type	Existing Facility
Rail Access	Served
Acres	n/a
Building Square Feet	180,000
Ceiling Height	25-35'
Zoning	Industrial
Distance to Highway	1.1 miles

CUYAHOGA COUNTY • OHIO

Area Highlights



LEADERSHIP and INGENUITY

Northeast Ohio is an 18-county region forged from **generations of hard work, innovation and determination**. We're a region that is igniting change and driving emerging markets with world-class developments and advanced manufacturing.

advanced manufacturing • aerospace and aviation • automotive • bio-health • food processing
headquarters and professional services • information technology • metal production and fabrication
oil and gas • polymers and materials



Centrally located and convenient

The Northeast Ohio region is centrally located between New York City, Chicago and Toronto, allowing quick market access to more than half of North America, including Canada. Almost 50 percent of the U.S. population is within 500 miles/805 km of the Cleveland Plus Region. Additionally, 60 percent of all U.S. Fortune 500 headquarters are within a day's drive of the region.

LOCATION

Conveniently connecting the world to you.

TRANSPORTATION ACCESS and CONNECTIVITY



Rail

CCRL, NS, WLE



Highway

Major Roadways



Port

Port of Cleveland



Airport

Cleveland-Hopkins International Airport

Cuyahoga County offers companies a remarkable pool of skilled workers.

1,235,072

population

40.3

median age

538,531

households

\$48,435

median household income

614,500

labor force

68,611

total employees in manufacturing

116,446

total employees in trade, transportation and utilities

10

higher education institutions

CUYAHOGA COUNTY Area Statistics

INCENTIVES

Local, State, and
Workforce Training
Assistance

The Enterprise Zone Program - Communities in Ohio may establish an **Enterprise Zone** that provides local officials with the ability to negotiate a tax incentive agreement with a prospective company. The Enterprise Zone Agreement is a contract between the community and the company. This contract must be executed prior to any portion of the project beginning. The rate and term of the tax exemption are negotiated between local officials and the company.

Economic Development Grant - The **JobsOhio Economic Development Grant** was created to promote economic development, business expansion, and job creation by providing funding for eligible projects in the State of Ohio. Grant decisions are based on a number of project factors, including but not limited to job creation, additional payroll, fixed-asset investment commitment, project return on investment, and project location.