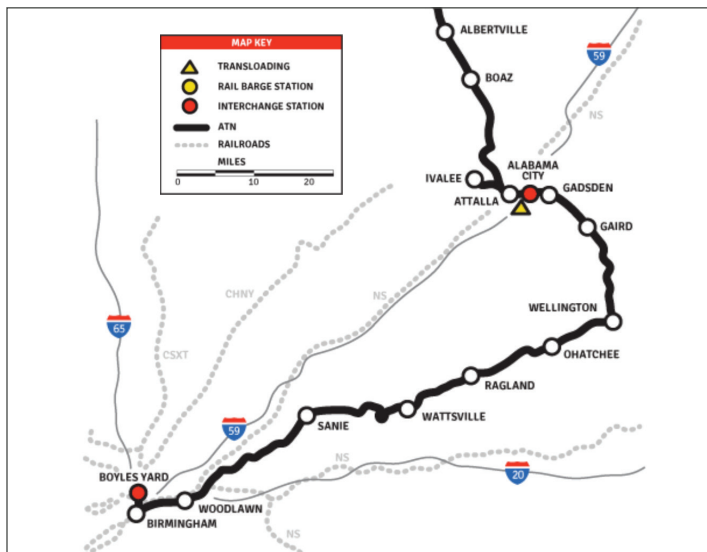


ETOWAH COUNTY • ALABAMA

101 Grissom Street, Gadsden



Site Specifications

Site Type	Greenfield
Rail Access	Adjacent
Acres	115
Zoning	Industrial
Distance to Highway	3.5 mi to I-759, 7.7 mi to I-59

NORTHEAST ALABAMA

Area Highlights



GROWTH and DIVERSITY OF INDUSTRIES

Located, Living and Logistics

Beyond the Southern hospitality, there are many plus reasons to doing business in the Southeast. The Southeast showcases companies across many industries, beyond manufacturing. This region shines with its highly skilled work force, moderate cost of living, and abundant land and pro-business laws.



Hospitable and Southernly Located

The Northeast Region of Alabama is situated near several major markets including Birmingham, Atlanta, Memphis, and Nashville. The strategic location allows quick access to major Eastern and Gulf ports, providing strategic access to international markets. Almost 50 percent of the U.S. population is within 500 miles of the Gadsden Plus Region. Additionally, 35 percent of all U.S. Fortune 500 headquarters are within a day's drive of the region.

LOCATION

Conveniently connecting the world to you.

TRANSPORTATION ACCESS and CONNECTIVITY



Rail

ATN, CSX, NS



Highway

Major Roadways



Port

Jefferson Birmingham County Port, Birmingham Marine Terminal



Airport

Birmingham-Shuttlesworth Int'l, Northeast Alabama Regional

Northeast Alabama offers companies a remarkable pool of skilled workers.

1,060,678

population

38.6

median age

486,250

households

\$51,977

median household income

504,976

labor force

49,554

total employees in manufacturing

16,606

total employees in logistics operations

10+

higher education institutions

NORTHEAST ALABAMA Area Statistics

INCENTIVES

Local, State, and
Workforce Training
Assistance

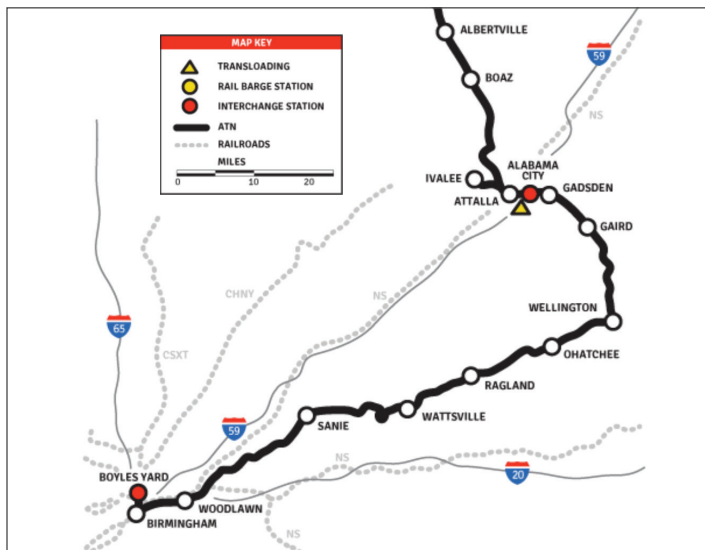
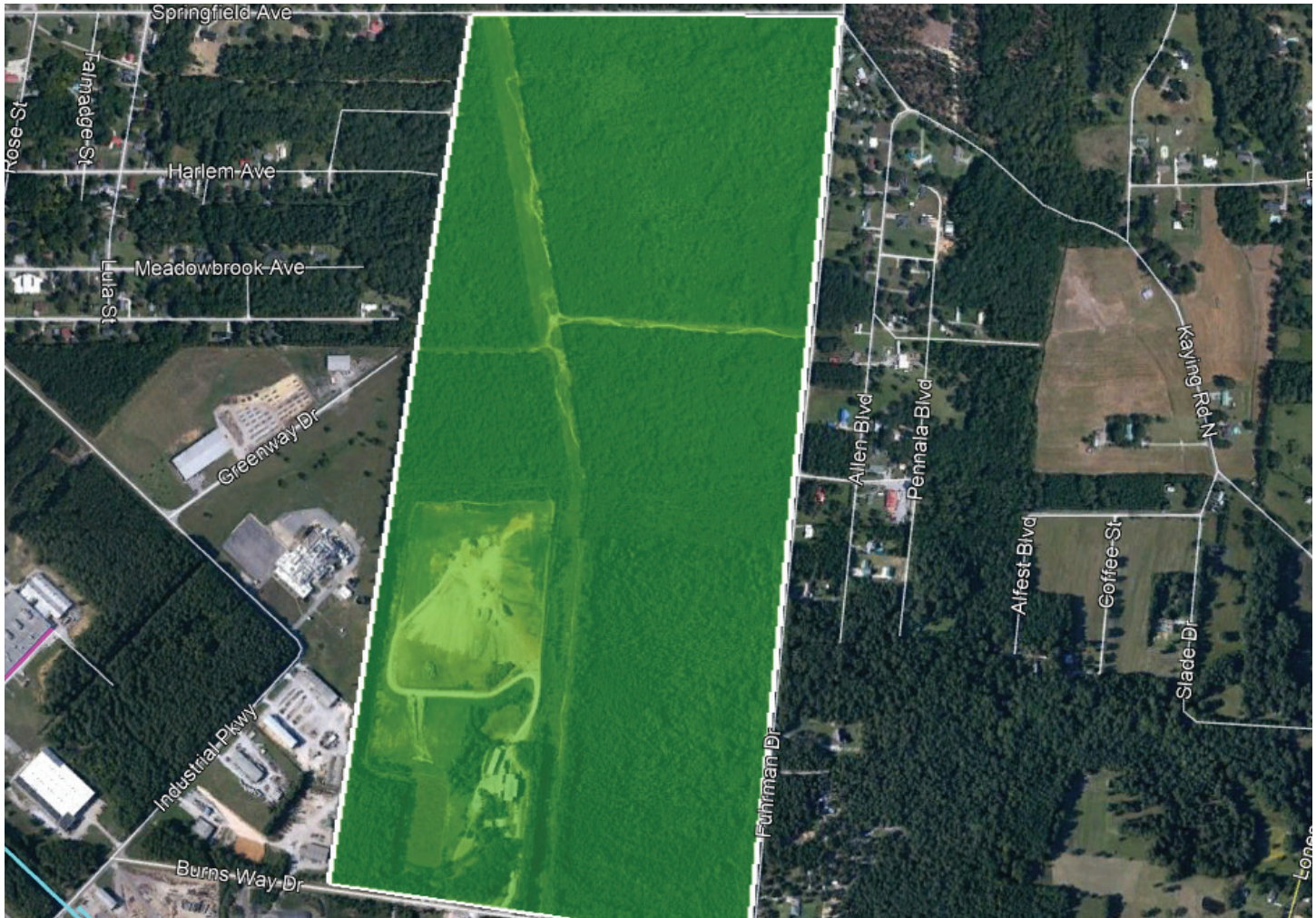
The **Growing Alabama Act** is an inventive mechanism allowing Alabama taxpayers to receive various tax credits (income, state, insurance, & utility) in return for providing cash contributions to local Economic Development Organizations.

The **Alabama Jobs Act** provides discretionary tax credits and cash rebates for opportunities bringing new net jobs and/or capital investment in State-defined targeted counties for growth.

Alabama's Workforce Training Program (AIDT) is a state agency under the Alabama Department of Commerce providing a full range of customized technical training programs at no cost to employers or trainees.

ETOWAH COUNTY • ALABAMA

Fuhrman Drive, Gadsden



Site Specifications

Site Type	Greenfield
Rail Access	Adjacent
Acres	266
Zoning	Industrial
Distance to Highway	2.9 mi to I-759, 7.1 mi to I-59

NORTHEAST ALABAMA

Area Highlights



GROWTH and DIVERSITY OF INDUSTRIES

Located, Living and Logistics

Beyond the Southern hospitality, there are many plus reasons to doing business in the Southeast. The Southeast showcases companies across many industries, beyond manufacturing. This region shines with its highly skilled work force, moderate cost of living, and abundant land and pro-business laws.



Hospitable and Southernly Located

The Northeast Region of Alabama is situated near several major markets including Birmingham, Atlanta, Memphis, and Nashville. The strategic location allows quick access to major Eastern and Gulf ports, providing strategic access to international markets. Almost 50 percent of the U.S. population is within 500 miles of the Gadsden Plus Region. Additionally, 35 percent of all U.S. Fortune 500 headquarters are within a day's drive of the region.

LOCATION

Conveniently connecting the world to you.

TRANSPORTATION ACCESS and CONNECTIVITY



Rail

ATN, CSX, NS



Highway

Major Roadways



Port

Jefferson Birmingham County Port, Birmingham Marine Terminal



Airport

Birmingham-Shuttlesworth Int'l, Northeast Alabama Regional

Northeast Alabama offers companies a remarkable pool of skilled workers.

1,060,678

population

38.6

median age

486,250

households

\$51,977

median household income

504,976

labor force

49,554

total employees in manufacturing

16,606

total employees in logistics operations

10+

higher education institutions

NORTHEAST ALABAMA Area Statistics

INCENTIVES

Local, State, and Workforce Training Assistance

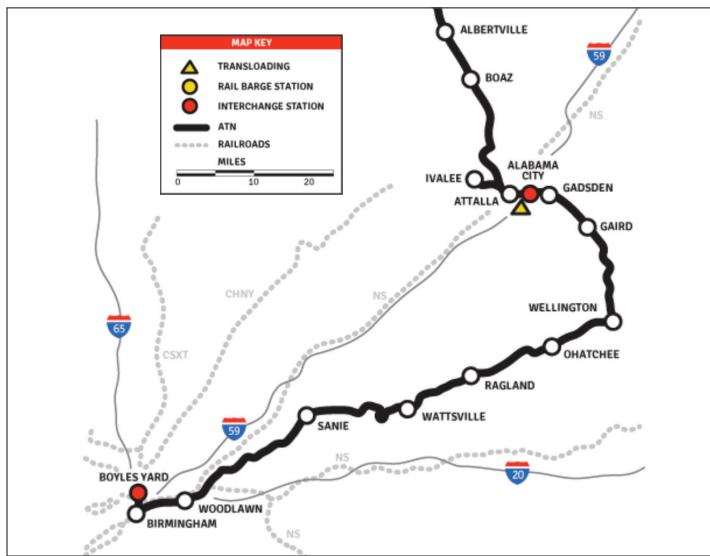
The **Growing Alabama Act** is an inventive mechanism allowing Alabama taxpayers to receive various tax credits (income, state, insurance, & utility) in return for providing cash contributions to local Economic Development Organizations.

The **Alabama Jobs Act** provides discretionary tax credits and cash rebates for opportunities bringing new net jobs and/or capital investment in State-defined targeted counties for growth.

Alabama's Workforce Training Program (AIDT) is a state agency under the Alabama Department of Commerce providing a full range of customized technical training programs at no cost to employers or trainees.

ETOWAH COUNTY • ALABAMA

351 1st Street NE, Atalla



Site Specifications

Site Type	Greenfield
Rail Access	Adjacent
Acres	23.4
Zoning	Industrial
Distance to Highway	0.8 mi to I-59

NORTHEAST ALABAMA

Area Highlights



GROWTH and DIVERSITY OF INDUSTRIES

Located, Living and Logistics

Beyond the Southern hospitality, there are many plus reasons to doing business in the Southeast. The Southeast showcases companies across many industries, beyond manufacturing. This region shines with its highly skilled work force, moderate cost of living, and abundant land and pro-business laws.



Hospitable and Southernly Located

The Northeast Region of Alabama is situated near several major markets including Birmingham, Atlanta, Memphis, and Nashville. The strategic location allows quick access to major Eastern and Gulf ports, providing strategic access to international markets. Almost 50 percent of the U.S. population is within 500 miles of the Gadsden Plus Region. Additionally, 35 percent of all U.S. Fortune 500 headquarters are within a day's drive of the region.

LOCATION

Conveniently connecting the world to you.

TRANSPORTATION ACCESS and CONNECTIVITY



Rail

ATN, CSX, NS



Highway

Major Roadways



Port

Jefferson Birmingham County Port, Birmingham Marine Terminal



Airport

Birmingham-Shuttlesworth Int'l, Northeast Alabama Regional

Northeast Alabama offers companies a remarkable pool of skilled workers.

1,060,678

population

38.6

median age

486,250

households

\$51,977

median household income

504,976

labor force

49,554

total employees in manufacturing

16,606

total employees in logistics operations

10+

higher education institutions

NORTHEAST ALABAMA Area Statistics

INCENTIVES

Local, State, and
Workforce Training
Assistance

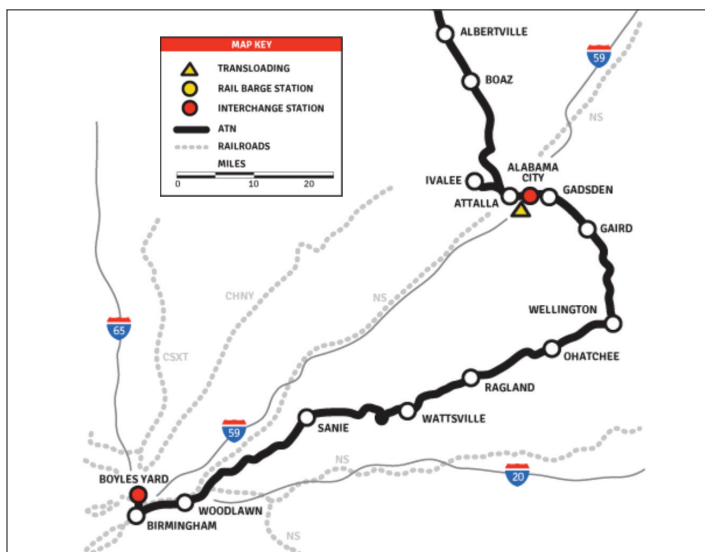
The **Growing Alabama Act** is an inventive mechanism allowing Alabama taxpayers to receive various tax credits (income, state, insurance, & utility) in return for providing cash contributions to local Economic Development Organizations.

The **Alabama Jobs Act** provides discretionary tax credits and cash rebates for opportunities bringing new net jobs and/or capital investment in State-defined targeted counties for growth.

Alabama's Workforce Training Program (AIDT) is a state agency under the Alabama Department of Commerce providing a full range of customized technical training programs at no cost to employers or trainees.

ETOWAH COUNTY • ALABAMA

1000 Goodyear Avenue, Gadsden



Site Specifications

Site Type	Existing facility
Rail Access	Served
Acres	156 acres
Building Square Feet	2.3mm SF
Ceiling Height	24-36 ft.
Zoning	Industrial
Distance to Highway	0.5 miles from highway

NORTHEAST ALABAMA

Area Highlights



GROWTH and DIVERSITY OF INDUSTRIES

Located, Living and Logistics

Beyond the Southern hospitality, there are many plus reasons to doing business in the Southeast. The Southeast showcases companies across many industries, beyond manufacturing. This region shines with its highly skilled work force, moderate cost of living, and abundant land and pro-business laws.



Hospitable and Southernly Located

The Northeast Region of Alabama is situated near several major markets including Birmingham, Atlanta, Memphis, and Nashville. The strategic location allows quick access to major Eastern and Gulf ports, providing strategic access to international markets. Almost 50 percent of the U.S. population is within 500 miles of the Gadsden Plus Region. Additionally, 35 percent of all U.S. Fortune 500 headquarters are within a day's drive of the region.

LOCATION

Conveniently connecting the world to you.

TRANSPORTATION ACCESS and CONNECTIVITY



Rail

ATN, CSX, NS



Highway

Major Roadways



Port

Jefferson Birmingham County Port, Birmingham Marine Terminal



Airport

Birmingham-Shuttlesworth Int'l, Northeast Alabama Regional

Northeast Alabama offers companies a remarkable pool of skilled workers.

1,060,678

population

38.6

median age

486,250

households

\$51,977

median household income

504,976

labor force

49,554

total employees in manufacturing

16,606

total employees in logistics operations

10+

higher education institutions

NORTHEAST ALABAMA Area Statistics

INCENTIVES

Local, State, and
Workforce Training
Assistance

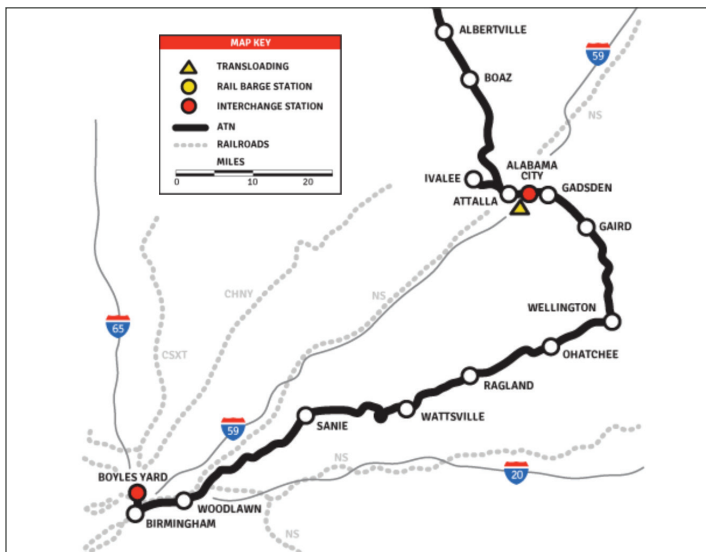
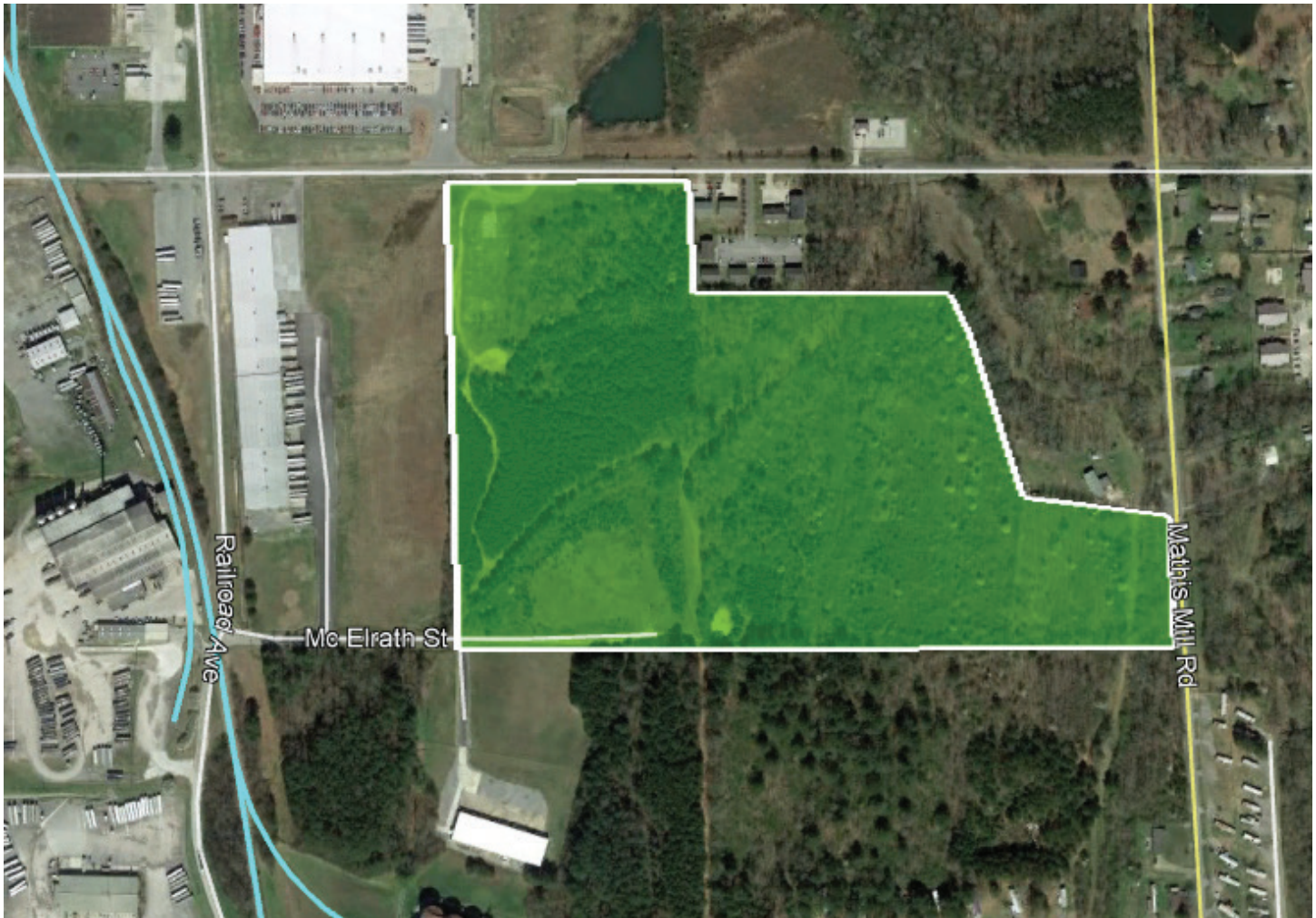
The **Growing Alabama Act** is an inventive mechanism allowing Alabama taxpayers to receive various tax credits (income, state, insurance, & utility) in return for providing cash contributions to local Economic Development Organizations.

The **Alabama Jobs Act** provides discretionary tax credits and cash rebates for opportunities bringing new net jobs and/or capital investment in State-defined targeted counties for growth.

Alabama's Workforce Training Program (AIDT) is a state agency under the Alabama Department of Commerce providing a full range of customized technical training programs at no cost to employers or trainees.

MARSHALL COUNTY • ALABAMA

2450 George Wallace Dr., Albertville



Site Specifications

Site Type	Greenfield
Rail Access	Adjacent
Acres	43.5
Zoning	Industrial
Distance to Highway	0.8 mi to US-431, 18 mi to I-59

NORTHEAST ALABAMA

Area Highlights



GROWTH and DIVERSITY OF INDUSTRIES

Located, Living and Logistics

Beyond the Southern hospitality, there are many plus reasons to doing business in the Southeast. The Southeast showcases companies across many industries, beyond manufacturing. This region shines with its highly skilled work force, moderate cost of living, and abundant land and pro-business laws.



Hospitable and Southernly Located

The Northeast Region of Alabama is situated near several major markets including Birmingham, Atlanta, Memphis, and Nashville. The strategic location allows quick access to major Eastern and Gulf ports, providing strategic access to international markets. Almost 50 percent of the U.S. population is within 500 miles of the Gadsden Plus Region. Additionally, 35 percent of all U.S. Fortune 500 headquarters are within a day's drive of the region.

LOCATION

Conveniently connecting the world to you.

TRANSPORTATION ACCESS and CONNECTIVITY



Rail

ATN, CSX, NS



Highway

Major Roadways



Port

Jefferson Birmingham County Port, Birmingham Marine Terminal



Airport

Birmingham-Shuttlesworth Int'l, Northeast Alabama Regional

Northeast Alabama offers companies a remarkable pool of skilled workers.

1,060,678

population

38.6

median age

486,250

households

\$51,977

median household income

504,976

labor force

49,554

total employees in manufacturing

16,606

total employees in logistics operations

10+

higher education institutions

NORTHEAST ALABAMA Area Statistics

INCENTIVES

Local, State, and
Workforce Training
Assistance

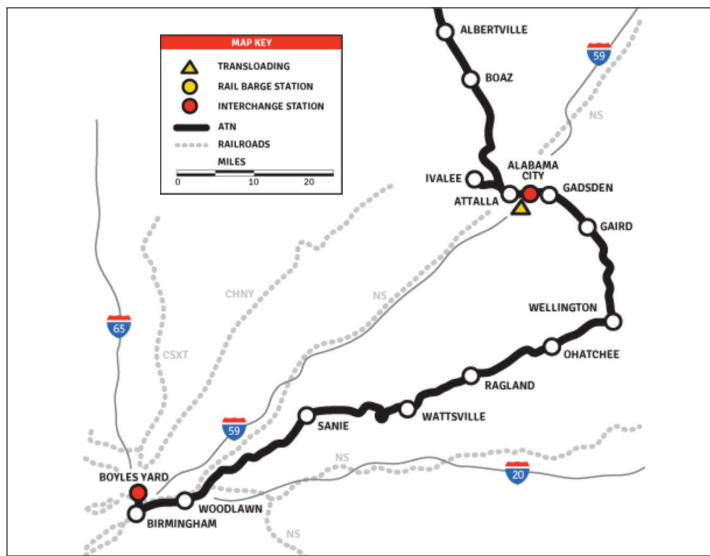
The **Growing Alabama Act** is an inventive mechanism allowing Alabama taxpayers to receive various tax credits (income, state, insurance, & utility) in return for providing cash contributions to local Economic Development Organizations.

The **Alabama Jobs Act** provides discretionary tax credits and cash rebates for opportunities bringing new net jobs and/or capital investment in State-defined targeted counties for growth.

Alabama's Workforce Training Program (AIDT) is a state agency under the Alabama Department of Commerce providing a full range of customized technical training programs at no cost to employers or trainees.

MARSHALL COUNTY • ALABAMA

100 ATP Drive, Albertville



Site Specifications	
Site Type	Greenfield
Rail Access	Adjacent
Acres	14.4
Zoning	Industrial
Distance to Highway	0.9 mi to US-431, 18 mi to I-59

NORTHEAST ALABAMA

Area Highlights



GROWTH and DIVERSITY OF INDUSTRIES

Located, Living and Logistics

Beyond the Southern hospitality, there are many plus reasons to doing business in the Southeast. The Southeast showcases companies across many industries, beyond manufacturing. This region shines with its highly skilled work force, moderate cost of living, and abundant land and pro-business laws.



Hospitable and Southernly Located

The Northeast Region of Alabama is situated near several major markets including Birmingham, Atlanta, Memphis, and Nashville. The strategic location allows quick access to major Eastern and Gulf ports, providing strategic access to international markets. Almost 50 percent of the U.S. population is within 500 miles of the Gadsden Plus Region. Additionally, 35 percent of all U.S. Fortune 500 headquarters are within a day's drive of the region.

LOCATION

Conveniently connecting the world to you.

TRANSPORTATION ACCESS and CONNECTIVITY



Rail

ATN, CSX, NS



Highway

Major Roadways



Port

Jefferson Birmingham
County Port,
Birmingham Marine
Terminal



Airport

Birmingham-
Shuttlesworth Int'l,
Northeast Alabama
Regional

Northeast Alabama offers companies a remarkable pool of skilled workers.

1,060,678

population

38.6

median age

486,250

households

\$51,977

median household
income

504,976

labor force

49,554

total employees in
manufacturing

16,606

total employees in
logistics operations

10+

higher education
institutions

NORTHEAST ALABAMA Area Statistics

INCENTIVES

Local, State, and
Workforce Training
Assistance

The **Growing Alabama Act** is an inventive mechanism allowing Alabama taxpayers to receive various tax credits (income, state, insurance, & utility) in return for providing cash contributions to local Economic Development Organizations.

The **Alabama Jobs Act** provides discretionary tax credits and cash rebates for opportunities bringing new net jobs and/or capital investment in State-defined targeted counties for growth.

Alabama's Workforce Training Program (AIDT) is a state agency under the Alabama Department of Commerce providing a full range of customized technical training programs at no cost to employers or trainees.