



Rail Access Sites

Cumberland County New Jersey

Property Details

Privately owned 19-acre greenfield space located in Millville's Industrial Park with excellent access to New Jersey Route 55. The property is in Millville's Urban Enterprise Zone and Redevelopment Area. The property is eligible for Municipal Tax Abatements on new construction.

Rail Highlights

The Winchester and Western rail line is a **Dual Served** rail service that connects to both the CSX and Norfolk Southern national rail lines.

3,200 ft

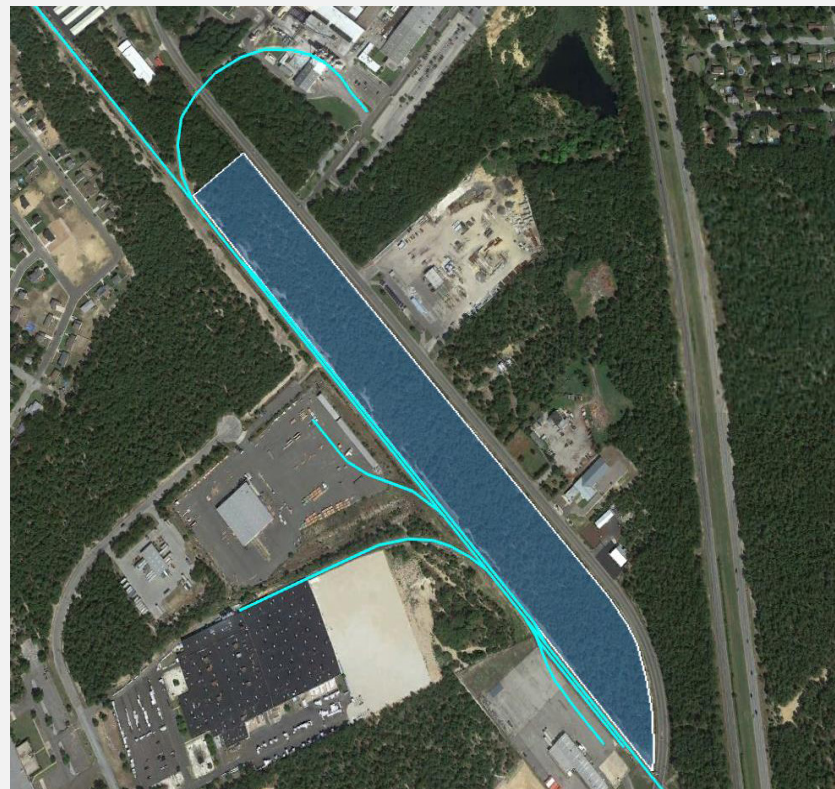
Rail Frontage

105

Car Capacity

1,200

Carloads Annually



**1600 Eden Rd.
Millville, NJ**

Incentives/Zones

19 Acres

Urban Enterprise Zone

Redevelopment Area



Cumberland County, New Jersey

Cumberland County, located in southern New Jersey, is strategically located amid the Northeast Corridor, with ready access to major highway, freight, water, and air transportation routes as well as 20% of the US population. While having breathtaking rural and scenic attractions, there are several areas around the county designated by the state and municipalities with available infrastructure and compatible zoning for industrial growth.

Site Profile

Zoning: Industrial

Owner: City of Bridgeton

Price: \$20,000-\$25,000 acre

Infrastructure/Utilities

Electric: Atlantic City Electric

Gas: South Jersey Gas

Water: City of Bridgeton

Wastewater: CCUA

Demographics/Population

Cumberland: 150,972

25-Mile Radius: 504,987

50-Mile Radius: 4,805,038

100-Mile: 16,286,485

Workforce

The Cumberland County Workforce Development Board provides companies with several options to recruit new employees. This includes assisting in the application process for on the job training programs, application aide for federal employment tax credits, and employment screening and support services.

Contact Information

Cumberland County

Kim Ayres
ed@ccia-net.com
856-825-3700 ext. 1233

OmniTRAX

Tami Alexander
talexander@omnitrax.com
681-247-9053

New Jersey

Frank Danieli
fdanieli@choosenj.com
609-297-2196



Rail Access Sites

Cumberland County New Jersey

Property Details

The Food Technology Park is municipally-owned industrial land by the City of Bridgeton and the Cumberland County Improvement Authority (CCIA). The property sits on 14.6 acres and borders the Rutgers Food Innovation Center (RFIC) and newly formed Food Specialization Center (FSC).

Rail Highlights

The Winchester and Western rail line is a **Dual Served** rail service that connects to both the CSX and Norfolk Southern national rail lines.

1,400 ft
Rail Frontage

1,200
Carloads Annually

10
Car Capacity



Food Technology Park

Incentives/Zones 14.6 Acres

Urban Enterprise Zone (UEZ)

Opportunity Zone (OZ)

Redevelopment Area



OmniTRAX



WW
WINCHESTER & WESTERN

Cumberland County, New Jersey

Cumberland County, located in southern New Jersey, is strategically located amid the Northeast Corridor, with ready access to major highway, freight, water, and air transportation routes as well as 20% of the US population. While having breathtaking rural and scenic attractions, there are several areas around the county designated by the state and municipalities with available infrastructure and compatible zoning for industrial growth.

Site Profile

Zoning: Industrial

Owner: City of Bridgeton

Price: \$20,000-\$25,000 acre

Infrastructure/Utilities

Electric: Atlantic City Electric

Gas: South Jersey Gas

Water: City of Bridgeton

Wastewater: CCUA

Demographics/Population

Cumberland: 150,972

25-Mile Radius: 504,987

50-Mile Radius: 4,805,038

100-Mile: 16,286,485

Workforce

The Cumberland County Workforce Development Board provides companies with several options to recruit new employees. This includes assisting in the application process for on the job training programs, application aide for federal employment tax credits, and employment screening and support services.

Contact Information

Cumberland County

Kim Ayres
ed@ccia-net.com
856-825-3700 ext. 1233

OmniTRAX

Tami Alexander
talexander@omnitrax.com
681-247-9053

New Jersey

Frank Danieli
fdanieli@choosenj.com
609-297-2196

CUMBERLAND YES
Your Economic Solution



choose:
new jersey



Rail Access Sites

Cumberland County
New Jersey

Property Details

A privately owned 143-acre greenfield site zoned industrial/agribusiness in Upper Deerfield Township's Redevelopment Area. The property is eligible for Municipal Tax Abatements on new construction.

Rail Highlights

The Winchester and Western rail line is a **Dual Served** rail service that connects to both the CSX and Norfolk Southern national rail lines.

1,910 ft

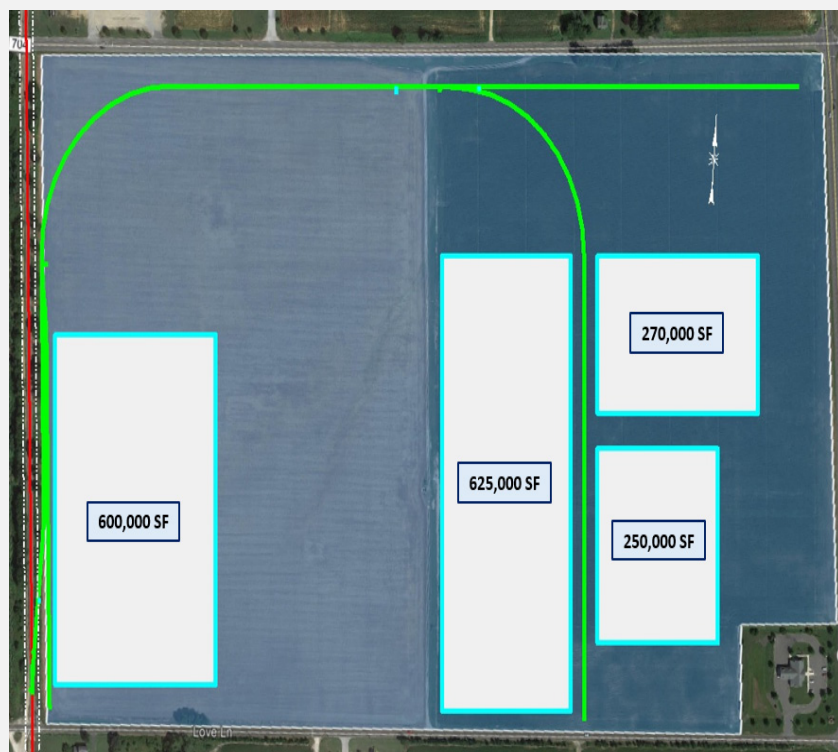
Rail Frontage

105

Car Capacity

1,200

Carloads Annually



Upper Deerfield Redevelopment Area

Incentives/Zones 143 Acres

Redevelopment Area

Municipal Tax Abatement



Cumberland County, New Jersey

Cumberland County, located in southern New Jersey, is strategically located amid the Northeast Corridor, with ready access to major highway, freight, water, and air transportation routes as well as 20% of the US population. While having breathtaking rural and scenic attractions, there are several areas around the county designated by the state and municipalities with available infrastructure and compatible zoning for industrial growth.

Site Profile

Zoning: Industrial

Owner: City of Bridgeton

Price: \$20,000-\$25,000 acre

Infrastructure/Utilities

Electric: Atlantic City Electric

Gas: South Jersey Gas

Water: City of Bridgeton

Wastewater: CCUA

Demographics/Population

Cumberland: 150,972

25-Mile Radius: 504,987

50-Mile Radius: 4,805,038

100-Mile: 16,286,485

Workforce

The Cumberland County Workforce Development Board provides companies with several options to recruit new employees. This includes assisting in the application process for on the job training programs, application aide for federal employment tax credits, and employment screening and support services.

Contact Information

Cumberland County

Kim Ayres
ed@ccia-net.com
856-825-3700 ext. 1233

OmniTRAX

Tami Alexander
talexander@omnitrax.com
681-247-9053

New Jersey

Frank Danieli
fdanieli@choosenj.com
609-297-2196



Rail Access Sites

Cumberland County New Jersey

Property Details

A privately owned 59.3-acre greenfield site zoned industrial/agribusiness in Upper Deerfield's Township's Redevelopment Area with an active rail spur that currently services Purdue and Growmark.

Rail Highlights

The Winchester and Western rail line is a **Dual Served** rail service that connects to both the CSX and Norfolk Southern national rail lines.

2,884 ft

Rail Frontage

56

Car Capacity

1,200

Carloads Annually



Upper Deerfield Redevelopment Area

Incentives/Zones 59 Acres

Redevelopment Area

Municipal Tax Abatement



OmniTRAX



WW
WINCHESTER & WESTERN

Cumberland County, New Jersey

Cumberland County, located in southern New Jersey, is strategically located amid the Northeast Corridor, with ready access to major highway, freight, water, and air transportation routes as well as 20% of the US population. While having breathtaking rural and scenic attractions, there are several areas around the county designated by the state and municipalities with available infrastructure and compatible zoning for industrial growth.

Site Profile

Zoning: Industrial

Owner: City of Bridgeton

Price: \$20,000-\$25,000 acre

Infrastructure/Utilities

Electric: Atlantic City Electric

Gas: South Jersey Gas

Water: City of Bridgeton

Wastewater: CCUA

Demographics/Population

Cumberland: 150,972

25-Mile Radius: 504,987

50-Mile Radius: 4,805,038

100-Mile: 16,286,485

Workforce

The Cumberland County Workforce Development Board provides companies with several options to recruit new employees. This includes assisting in the application process for on the job training programs, application aide for federal employment tax credits, and employment screening and support services.

Contact Information

Cumberland County

Kim Ayres
ed@ccia-net.com
856-825-3700 ext. 1233

OmniTRAX

Tami Alexander
talexander@omnitrax.com
681-247-9053

New Jersey

Frank Danieli
fdanieli@choosenj.com
609-297-2196

CUMBERLAND YES
Your Economic Solution



choose:
new jersey



Rail Access Sites

Cumberland County New Jersey

Property Details

A privately owned 143-acre greenfield site zoned industrial/agribusiness in Upper Deerfield Township's Redevelopment Area. The property is eligible for Municipal Tax Abatements on new construction.

Rail Highlights

The Winchester and Western rail line is a **Dual Served** rail service that connects to both the CSX and Norfolk Southern national rail lines.

2,260 ft
Rail Frontage

1,200
Carloads Annually

105
Car Capacity



Upper Deerfield Redevelopment Area

Incentives/Zones 143 Acres

Redevelopment Area

Municipal Tax Abatement



Cumberland County, New Jersey

Cumberland County, located in southern New Jersey, is strategically located amid the Northeast Corridor, with ready access to major highway, freight, water, and air transportation routes as well as 20% of the US population. While having breathtaking rural and scenic attractions, there are several areas around the county designated by the state and municipalities with available infrastructure and compatible zoning for industrial growth.

Site Profile

Zoning: Industrial

Owner: City of Bridgeton

Price: \$20,000-\$25,000 acre

Infrastructure/Utilities

Electric: Atlantic City Electric

Gas: South Jersey Gas

Water: City of Bridgeton

Wastewater: CCUA

Demographics/Population

Cumberland: 150,972

25-Mile Radius: 504,987

50-Mile Radius: 4,805,038

100-Mile: 16,286,485

Workforce

The Cumberland County Workforce Development Board provides companies with several options to recruit new employees. This includes assisting in the application process for on the job training programs, application aide for federal employment tax credits, and employment screening and support services.

Contact Information

Cumberland County

Kim Ayres
ed@ccia-net.com
856-825-3700 ext. 1233

OmniTRAX

Tami Alexander
talexander@omnitrax.com
681-247-9053

New Jersey

Frank Danieli
fdanieli@choosenj.com
609-297-2196



Rail Access Sites

Cumberland County New Jersey

Property Details

The Bridgeton Industrial Park is municipally-owned land by the City of Bridgeton. The property sits on 7.2 acres of industrial land and is in close proximity to the Rutgers Food Innovation Center (RFIC) and the newly formed Food Specialization Center (FSC).

Rail Highlights

The Winchester and Western rail line is a **Dual Served** rail service that connects to both the CSX and Norfolk Southern national rail lines.

1,400 ft
Rail Frontage

16
Car Capacity

1,200
Carloads Annually



N. Industrial Boulevard

Incentives/Zones 7.2 Acres

Urban Enterprise Zone (UEZ)

Opportunity Zone (OZ)

Redevelopment Area



OmniTRAX



WW
WINCHESTER & WESTERN

Cumberland County, New Jersey

Cumberland County, located in southern New Jersey, is strategically located amid the Northeast Corridor, with ready access to major highway, freight, water, and air transportation routes as well as 20% of the US population. While having breathtaking rural and scenic attractions, there are several areas around the county designated by the state and municipalities with available infrastructure and compatible zoning for industrial growth.

Site Profile

Zoning: Industrial

Owner: City of Bridgeton

Price: \$20,000-\$25,000 acre

Infrastructure/Utilities

Electric: Atlantic City Electric

Gas: South Jersey Gas

Water: City of Bridgeton

Wastewater: CCUA

Demographics/Population

Cumberland: 150,972

25-Mile Radius: 504,987

50-Mile Radius: 4,805,038

100-Mile: 16,286,485

Workforce

The Cumberland County Workforce Development Board provides companies with several options to recruit new employees. This includes assisting in the application process for on the job training programs, application aide for federal employment tax credits, and employment screening and support services.

Contact Information

Cumberland County

Kim Ayres
ed@ccia-net.com
856-825-3700 ext. 1233

OmniTRAX

Tami Alexander
talexander@omnitrax.com
681-247-9053

New Jersey

Frank Danieli
fdanieli@choosenj.com
609-297-2196

CUMBERLAND YES
Your Economic Solution



choose:
new jersey



Rail Access Sites

Cumberland County New Jersey

Property Details

The Bridgeton Industrial Park is municipally-owned land by the City of Bridgeton. The property sits on 7.2 acres of industrial land and is in close proximity to the Rutgers Food Innovation Center (RFIC) and the newly formed Food Specialization Center (FSC).

Rail Highlights

The Winchester and Western rail line is a **Dual Served** rail service that connects to both the CSX and Norfolk Southern national rail lines.

1,400 ft
Rail Frontage

16
Car Capacity

1,200
Carloads Annually



N. Industrial Boulevard

Incentives/Zones 7.2 Acres

Urban Enterprise Zone (UEZ)

Opportunity Zone (OZ)

Redevelopment Area



OmniTRAX



WW
WINCHESTER & WESTERN

Cumberland County, New Jersey

Cumberland County, located in southern New Jersey, is strategically located amid the Northeast Corridor, with ready access to major highway, freight, water, and air transportation routes as well as 20% of the US population. While having breathtaking rural and scenic attractions, there are several areas around the county designated by the state and municipalities with available infrastructure and compatible zoning for industrial growth.

Site Profile

Zoning: Industrial

Owner: City of Bridgeton

Price: \$20,000-\$25,000 acre

Infrastructure/Utilities

Electric: Atlantic City Electric

Gas: South Jersey Gas

Water: City of Bridgeton

Wastewater: CCUA

Demographics/Population

Cumberland: 150,972

25-Mile Radius: 504,987

50-Mile Radius: 4,805,038

100-Mile: 16,286,485

Workforce

The Cumberland County Workforce Development Board provides companies with several options to recruit new employees. This includes assisting in the application process for on the job training programs, application aide for federal employment tax credits, and employment screening and support services.

Contact Information

Cumberland County

Kim Ayres
ed@ccia-net.com
856-825-3700 ext. 1233

OmniTRAX

Tami Alexander
talexander@omnitrax.com
681-247-9053

New Jersey

Frank Danieli
fdanieli@choosenj.com
609-297-2196

CUMBERLAND YES
Your Economic Solution



choose:
new jersey



Rail Access Sites

Cumberland County New Jersey

Property Details

A 353,000 sq ft privately-owned manufacturing/warehouse facility available for sale or lease. The property is zoned industrial and has excellent access to New Jersey Route 55. The building features twenty tailgates and four drive-in doors and is located in Millville’s Urban Enterprise Zone and Redevelopment Area.

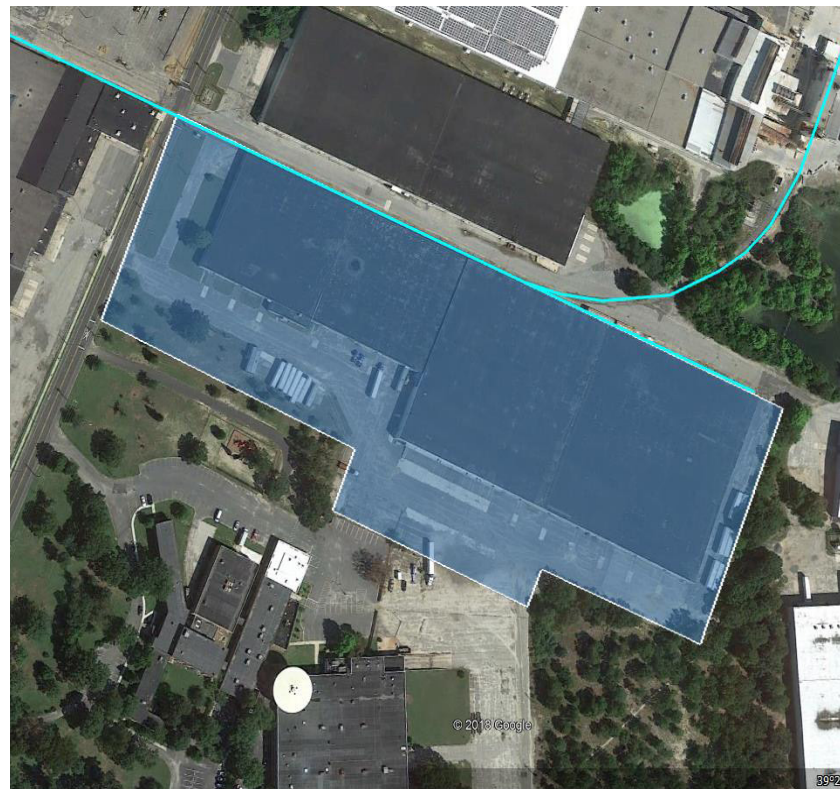
Rail Highlights

The Winchester and Western rail line is a **Dual Served** rail service that connects to both the CSX and Norfolk Southern national rail lines.

1,250 ft
Rail Frontage

1,200
Carloads Annually

105
Car Capacity



1401 Wheaton Ave.
Millville, NJ

Incentives/Zones 59 Acres

Urban Enterprise Zone

Redevelopment Area



Cumberland County, New Jersey

Cumberland County, located in southern New Jersey, is strategically located amid the Northeast Corridor, with ready access to major highway, freight, water, and air transportation routes as well as 20% of the US population. While having breathtaking rural and scenic attractions, there are several areas around the county designated by the state and municipalities with available infrastructure and compatible zoning for industrial growth.

Site Profile

Zoning: Industrial

Owner: City of Bridgeton

Price: \$20,000-\$25,000 acre

Infrastructure/Utilities

Electric: Atlantic City Electric

Gas: South Jersey Gas

Water: City of Bridgeton

Wastewater: CCUA

Demographics/Population

Cumberland: 150,972

25-Mile Radius: 504,987

50-Mile Radius: 4,805,038

100-Mile: 16,286,485

Workforce

The Cumberland County Workforce Development Board provides companies with several options to recruit new employees. This includes assisting in the application process for on the job training programs, application aide for federal employment tax credits, and employment screening and support services.

Contact Information

Cumberland County

Kim Ayres
ed@ccia-net.com
856-825-3700 ext. 1233

OmniTRAX

Tami Alexander
talexander@omnitrax.com
681-247-9053

New Jersey

Frank Danieli
fdanieli@choosenj.com
609-297-2196



Rail Access Sites

Cumberland County New Jersey

Property Details

Privately owned 24-acre greenfield space located in Millville’s Industrial Park with excellent access to New Jersey Route 55. The property is in Millville’s Urban Enterprise Zone and Redevelopment Area. The property is eligible for Municipal Tax Abatements on new construction.

Rail Highlights

The Winchester and Western rail line is a **Dual Served** rail service that connects to both the CSX and Norfolk Southern national rail lines.

952 ft

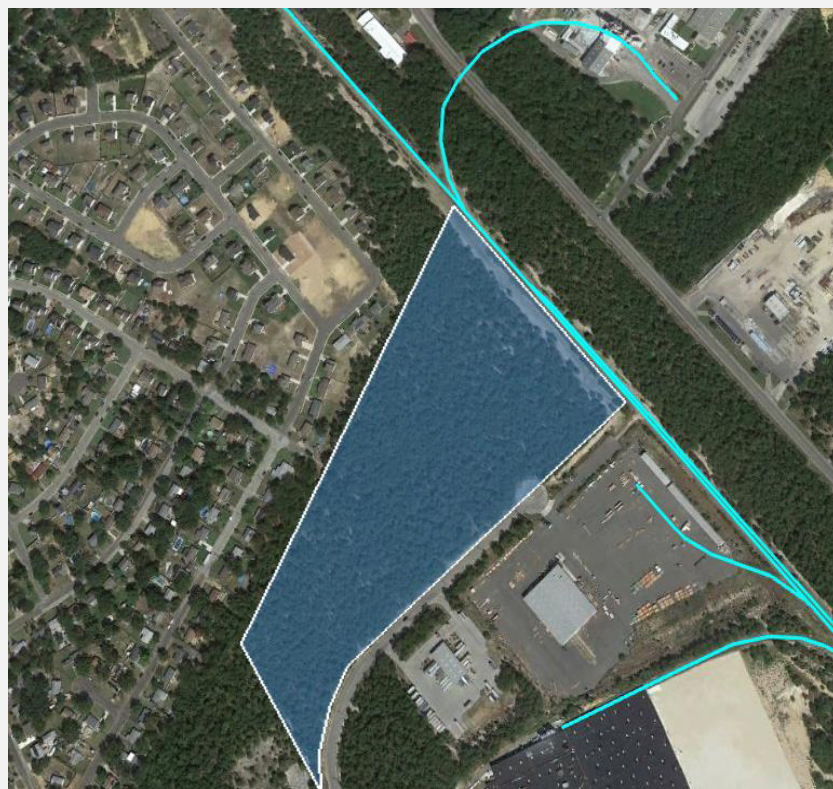
Rail Frontage

105

Car Capacity

1,200

Carloads Annually



1600 Eden Rd. Millville, NJ

Incentives/Zones

24 Acres

Urban Enterprise Zone

Redevelopment Area



Cumberland County, New Jersey

Cumberland County, located in southern New Jersey, is strategically located amid the Northeast Corridor, with ready access to major highway, freight, water, and air transportation routes as well as 20% of the US population. While having breathtaking rural and scenic attractions, there are several areas around the county designated by the state and municipalities with available infrastructure and compatible zoning for industrial growth.

Site Profile

Zoning: Industrial

Owner: City of Bridgeton

Price: \$20,000-\$25,000 acre

Infrastructure/Utilities

Electric: Atlantic City Electric

Gas: South Jersey Gas

Water: City of Bridgeton

Wastewater: CCUA

Demographics/Population

Cumberland: 150,972

25-Mile Radius: 504,987

50-Mile Radius: 4,805,038

100-Mile: 16,286,485

Workforce

The Cumberland County Workforce Development Board provides companies with several options to recruit new employees. This includes assisting in the application process for on the job training programs, application aide for federal employment tax credits, and employment screening and support services.

Contact Information

Cumberland County

Kim Ayres
ed@ccia-net.com
856-825-3700 ext. 1233

OmniTRAX

Tami Alexander
talexander@omnitrax.com
681-247-9053

New Jersey

Frank Danieli
fdanieli@choosenj.com
609-297-2196



Rail Access Sites

Cumberland County New Jersey

Property Details

A 250,000 sq ft privately-owned manufacturing/warehouse facility is available for sale or lease. The building features a second-floor with interior ramp access. The building is located in Bridgeton's Urban Enterprise Zone and is zoned industrial.

Rail Highlights

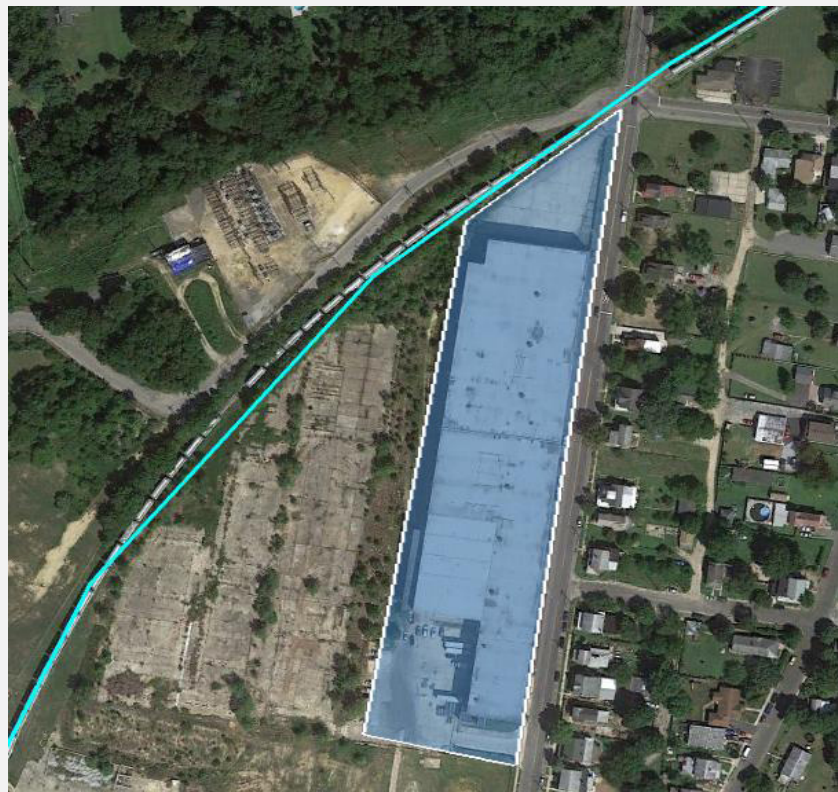
The Winchester and Western rail line is a **Dual Served** rail service that connects to both the CSX and Norfolk Southern national rail lines.

305ft
Rail Frontage

1,200
Carloads Annually

7

Car Capacity



**540 N. Laurel St.
Bridgeton, NJ**

Incentives/Zones	250K SF
-------------------------	----------------

Redevelopment Area

Urban Enterprise Zone



Cumberland County, New Jersey

Cumberland County, located in southern New Jersey, is strategically located amid the Northeast Corridor, with ready access to major highway, freight, water, and air transportation routes as well as 20% of the US population. While having breathtaking rural and scenic attractions, there are several areas around the county designated by the state and municipalities with available infrastructure and compatible zoning for industrial growth.

Site Profile

Zoning: Industrial

Owner: City of Bridgeton

Price: \$20,000-\$25,000 acre

Infrastructure/Utilities

Electric: Atlantic City Electric

Gas: South Jersey Gas

Water: City of Bridgeton

Wastewater: CCUA

Demographics/Population

Cumberland: 150,972

25-Mile Radius: 504,987

50-Mile Radius: 4,805,038

100-Mile: 16,286,485

Workforce

The Cumberland County Workforce Development Board provides companies with several options to recruit new employees. This includes assisting in the application process for on the job training programs, application aide for federal employment tax credits, and employment screening and support services.

Contact Information

Cumberland County

Kim Ayres
ed@ccia-net.com
856-825-3700 ext. 1233

OmniTRAX

Tami Alexander
talexander@omnitrax.com
681-247-9053

New Jersey

Frank Danieli
fdanieli@choosenj.com
609-297-2196