



Rail Access Sites

# Cumberland County New Jersey

## Property Details

A privately owned 48-acre greenfield site zoned industrial/agribusiness in Upper Deerfield Township's Redevelopment Area. The property is eligible for municipal tax abatements on new construction.

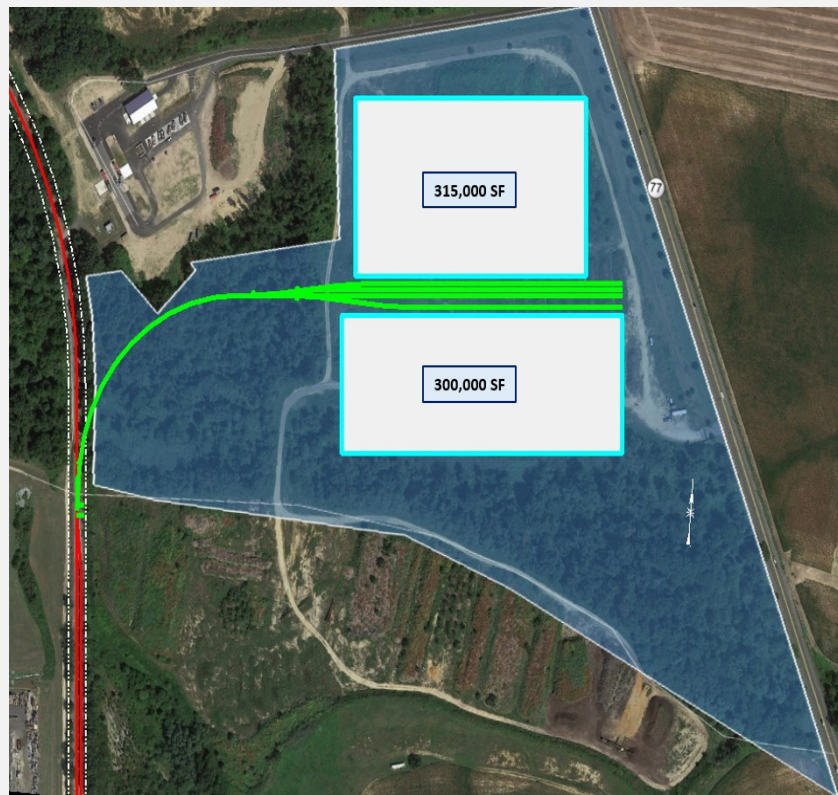
## Rail Highlights

The Winchester and Western rail line is a **Dual Served** rail service that connects to both the CSX and Norfolk Southern national rail lines.

**2,260 ft**  
Rail Frontage

**1,200**  
Carloads Annually

**105**  
Car Capacity



## Upper Deerfield Redevelopment Area

<b>Incentives/Zones</b>	<b>48 Acres</b>
-------------------------	-----------------

<b>Redevelopment Area</b>
---------------------------

<b>Municipal Tax Abatement</b>
--------------------------------



# Cumberland County, New Jersey

Cumberland County, located in southern New Jersey, is strategically located amid the Northeast Corridor, with ready access to major highway, freight, water, and air transportation routes as well as 20% of the US population. While having breathtaking rural and scenic attractions, there are several areas around the county designated by the state and municipalities with available infrastructure and compatible zoning for industrial growth.

## Site Profile

**Zoning:** Industrial

**Owner:** Private

**Price:** Upon Request

## Infrastructure/Utilities

**Electric:** Atlantic City Electric

**Gas:** South Jersey Gas

**Water:** City of Bridgeton

**Wastewater:** CCUA

## Demographics/Population

**Cumberland:** 150,972

**25-Mile Radius:** 504,987

**50-Mile Radius:** 4,805,038

**100-Mile:** 16,286,485

## Workforce

The Cumberland County Workforce Development Board provides companies with several options to recruit new employees. This includes assisting in the application process for on the job training programs, application aide for federal employment tax credits, and employment screening and support services.

# Contact Information

### Cumberland County

Kim Ayres  
ed@ccia-net.com  
856-825-3700 ext. 1233

### OmniTRAX

Ean Johnson, CECD  
ejohnson@omnitrax.com  
469-261-2083

### New Jersey

Frank Danieli  
fdanieli@choosenj.com  
609-297-2196

