



Rail Access Sites

Cumberland County New Jersey

Property Details

A privately owned 84.4-acre greenfield site zoned industrial/agribusiness in Upper Deerfield's Township's Redevelopment Area with an active rail spur that currently services Purdue and Growmark.

Rail Highlights

The Winchester and Western rail line is a **Dual Served** rail service that connects to both the CSX and Norfolk Southern national rail lines.

2,884 ft

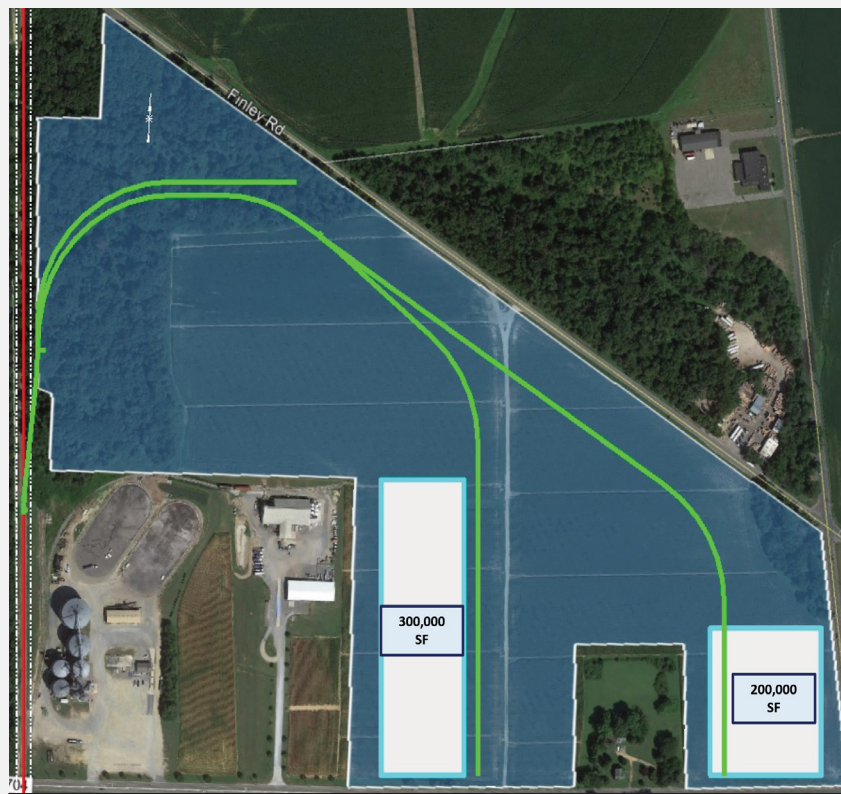
Rail Frontage

56

Car Capacity

1,200

Carloads Annually



Upper Deerfield Redevelopment Area

Incentives/Zones	84 Acres
Redevelopment Area	
Municipal Tax Abatement	



Cumberland County, New Jersey

Cumberland County, located in southern New Jersey, is strategically located amid the Northeast Corridor, with ready access to major highway, freight, water, and air transportation routes as well as 20% of the US population. While having breathtaking rural and scenic attractions, there are several areas around the county designated by the state and municipalities with available infrastructure and compatible zoning for industrial growth.

Site Profile

Zoning: Industrial

Owner: Private

Price: \$20,000-\$25,000 acre

Infrastructure/Utilities

Electric: Atlantic City Electric

Gas: South Jersey Gas

Water: City of Bridgeton

Wastewater: CCUA

Demographics/Population

Cumberland: 150,972

25-Mile Radius: 504,987

50-Mile Radius: 4,805,038

100-Mile: 16,286,485

Workforce

The Cumberland County Workforce Development Board provides companies with several options to recruit new employees. This includes assisting in the application process for on the job training programs, application aide for federal employment tax credits, and employment screening and support services.

Contact Information

Cumberland County

Kim Ayres

ed@ccia-net.com

856-825-3700 ext. 1233

OmniTRAX

Ean Johnson, CECD

ejohnson@omnitrax.com

469-261-2083

New Jersey

Frank Danieli

fdanieli@choosenj.com

609-297-2196